

Clemson University

**TigerPrints**

---

Football Programs

Programs

---

1927

## Wofford vs Clemson (10/29/1927)

Clemson University

Follow this and additional works at: [https://tigerprints.clemson.edu/fball\\_prgms](https://tigerprints.clemson.edu/fball_prgms)

Materials in this collection may be protected by copyright law (Title 17, U.S. code). Use of these materials beyond the exceptions provided for in the Fair Use and Educational Use clauses of the U.S. Copyright Law may violate federal law.

For additional rights information, please contact Kirstin O'Keefe (kokeefe [at] clemson [dot] edu)

For additional information about the collections, please contact the Special Collections and Archives by phone at 864.656.3031 or via email at cuscl [at] clemson [dot] edu

---

### Recommended Citation

University, Clemson, "Wofford vs Clemson (10/29/1927)" (1927). *Football Programs*. 2.  
[https://tigerprints.clemson.edu/fball\\_prgms/2](https://tigerprints.clemson.edu/fball_prgms/2)

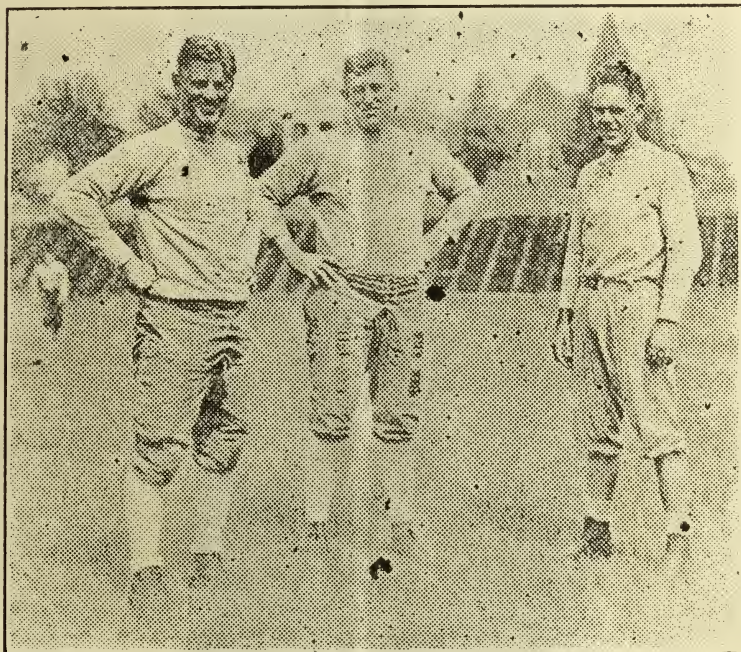
This Book is brought to you for free and open access by the Programs at TigerPrints. It has been accepted for inclusion in Football Programs by an authorized administrator of TigerPrints. For more information, please contact [kokeefe@clemson.edu](mailto:kokeefe@clemson.edu).

**OFFICIAL PROGRAM**  
**CLEMSON COLLEGE**

VS.

**WOFFORD**

OCTOBER 29, 1927



CLEMSON'S COACHING STAFF

PUBLISHED BY  
**CLEMSON ATHLETIC ASSOCIATION**

Price 15 Cents

---

# GALLANT-BELK COMPANY

ANDERSON'S LEADING DEPARTMENT STORE  
ANDERSON, SOUTH CAROLINA

---



ESKEW (CAPTAIN)

---

# M. M. HUNTER

Pendleton, S. C.

DRY GOODS, GROCERIES AND HARDWARE

---



---

CLEMSON MEN ARE ALWAYS WELCOME AT  
**McBRAYER'S Inc.**

The Home of Society Brand Clothes and Dobbs Hats  
ANDERSON, SOUTH CAROLINA

---



"RED" DAVIS

---

TRY  
**THE TOASTEE SANDWICH SHOP**

ANDERSON, SOUTH CAROLINA

A Place to Eat That's Different

**SANDWICHES      WAFFLES      SHORT ORDERS**

---

---

# CAROLINA NATIONAL BANK

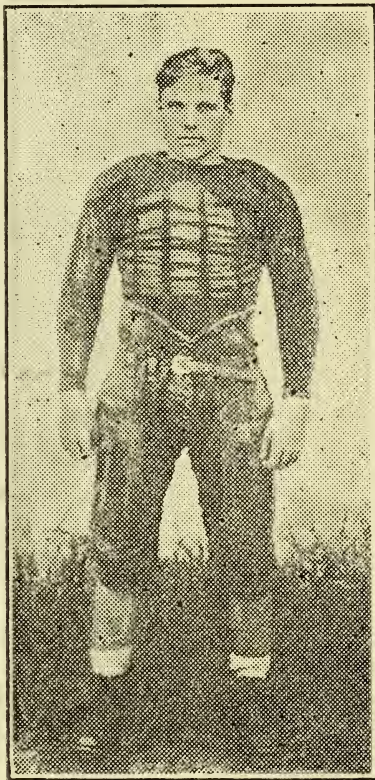
ANDERSON, S. C.

MEMBER FEDERAL RESERVE SYSTEM

---



MOULEDOUS



HAIR

---

## THE COLLEGE GARAGE

WHEN YOU NEED QUICK SERVICE PHONE US

Night Phone 77-J

Day Phone 77-W

CLEMSON COLLEGE, - - SOUTH CAROLINA

---



---

# Clinkscates & Crowther *TRANSFER*

CLEMSON COLLEGE, - - SOUTH CAROLINA

---



**BOB McCARLEY**

---

## **WEBB-CASON DRUG COMPANY**

DRINKS, CIGARS, AND STATONERY

**All Clemson Men Stop Here**

**ANDERSON - - - - - South Carolina**

---

---

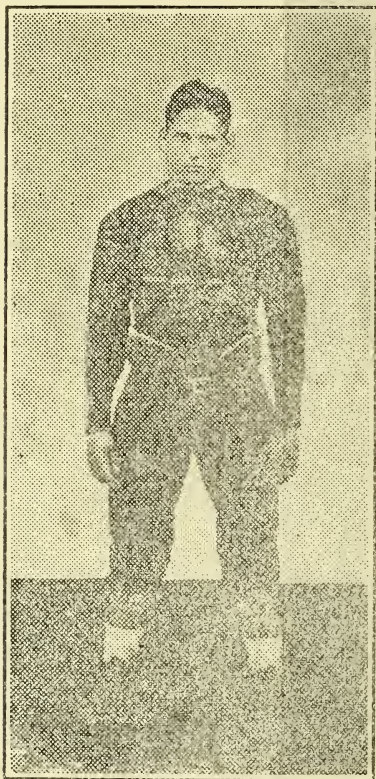
# SLOAN BROTHERS

Established at Clemson 1893

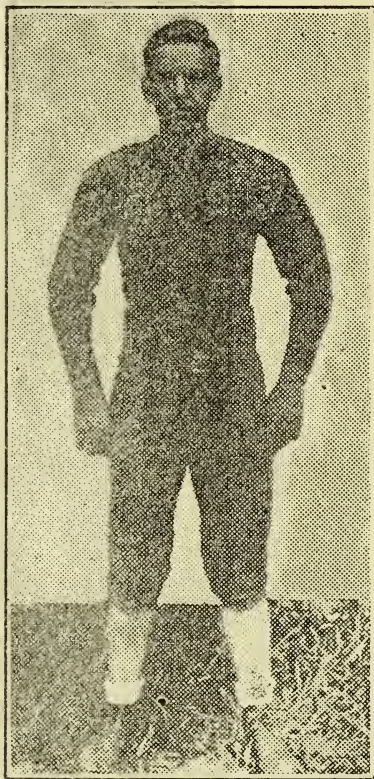
RIGHT GOODS AT RIGHT PRICES

We Treat Our Customers Right or We Wouldn't be Right Here

---



CUTTINO



O. K. PRESSLEY

---

## AUNT MARY'S CREAM BREAD

MADE TO MEET DEMAND—NOT COMPETITION

On Sale Anywhere at Clemson

---



---

# THE FORT HILL BANK

CLEMSON COLLEGE, S. C.

CONSERVATIVE -- SAFE -- SOUND

Capital and Surplus Over \$25,000.00

---

## J. S. GOODMAN'S FILLING STATION

GULF GAS AND OIL

Agents for Quaker State Oil

Cold Drinks and Peanuts

CLEMSON COLLEGE, S. C.

---

QUALITY



SERVICE

---

## G. F. Tolly & Son

The Cheapest Furniture House in South Carolina

ANDERSON, S. C.

EVERYBODY AT CLEMSON TRADES AT TOLLY'S

---

## THE TIGER DRY CLEANING PLANT AND SHOE SHOP

Is equipped with the latest machinery.

Quick Service and Quality guaranteed.

CILNT TAYLOR, Proprietor

---



---

# Livingston & Company

WHOLESALE GROCERIES

Greenville, - - - South Carolina

---

## LIST OF CLEMSON PLAYERS

Name	Number	Position	Weight	Years on team
Eskew, Capt.	61	Quarter	168	3
Guy Davis	62	Guard	174	2
Swofford	63	Guard	190	1
Warr	64	Half	172	2
Bob McCarley	65	Full	165	1
Padgett	66	End	168	1
Yarborough	67	Tackle	173	1
Mouledous	68	Half	162	1
Gibson	69	Center	174	1
Wray	70	End	161	1
Gunnells	71	Guard	192	1
Hane	72	Full	167	1
Hall	73	Tackle	218	2
Minson	74	Tackle	188	2
Pressley, O. K.	75	Tackle	189	1
Asbill	76	End	157	1
McConnell	77	Half	164	3
C. McMillan	78	Half	156	1
Rogers	79	Quarter	147	1
Pitts	80	Quarter	158	1
Jones	81	Tackle	186	1
R. F. McMillan	82	Half	142	2
Davis, J. L.	83	Half	138	1
McCarley, H. D.	94	Half	164	1
Woodruff	85	End	145	1
Harvey	86	Center	208	3
Gassoway	87	Tackle	188	1
Pressley, W. H.	88	Full	168	1
Snowden	89	Guard	174	1
Cuttino	90	End	148	3
Timmerman	91	End	154	2
Reeves	92	End	167	2
Hair	93	End	171	2
Magill	84	Tackle	170	1
Martin	95	Guard	173	3
Robinson	96	Tackle	190	3
Zeigler	54	Half	146	1

---

## SULLIVAN HARDWARE COMPANY

HARDWARE, MILL SUPPLIES, HOUSEWANTS

ATHLETIC EQUIPMENT

ANDERSON

BELTON

GREENVILLE

GREER

---

---

# J. O. JONES COMPANY

GREENVILLE, SOUTH CAROLINA

Hart-Schaffner & Marx Clothes—Nettleton Shoes

GREENVILLE'S CLEMSON HEADQUARTERS

---

## WOFFORD PLAYERS

14—WRIGHT, Captain	23—KENNEDY
3—FINNEY	36—BROWNING
4—WHEELER	38—BERRY
12—ADAMS	2—MOSELEY
24—CROOK	33—WILLIAMS
39—FLEMING	8—WALKER
9—JONES	6—LEVER
30—KIRKLEY	19—TINSLEY
35—KING	31—COLLINS
18—McGEE	25—AUSTIN
20—BROWN, F. A.	11—RUSHTON
5—LOCKMAN	36—DARGAN, P. P.
32—INABINET	28—PLAYER
13—BROWN, G.	37—BROWN, H.
10—DUPRE	21—DARGAN, R.
22—KAIGLER	27—TURBEVILLE

---

## John C. Calhoun Hotel

ANDERSON, - - - South Carolina

A Cordial Welcome Extended to Clemson Faculty and Students

---



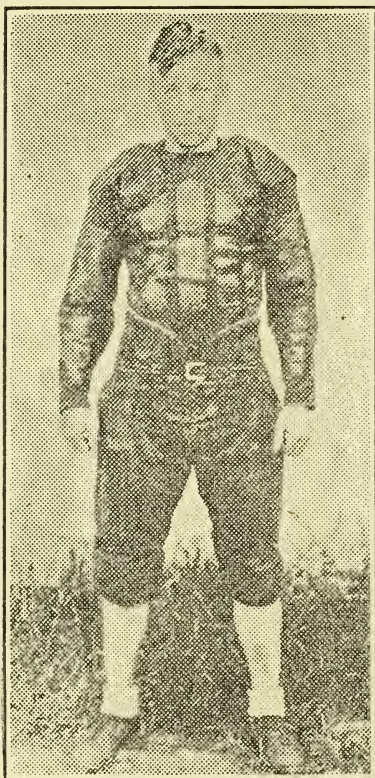
---

# MOORE-WILSON COMPANY

ANDERSON'S MOST EXCLUSIVE STORE

FOR WOMEN

---



"STICK" McCARLEY



TIMMERMAN

---

SPORTING GOODS

RADIOS

## SPEER - LAVAL - WALKER, INC.

Phone 1676

GREENVILLE, S. C.

P. O. Box 1163

---

---

CLEMSON BOYS—WHEN IN GREENVILLE, MAKE

# GREENVILLE PHARMACY

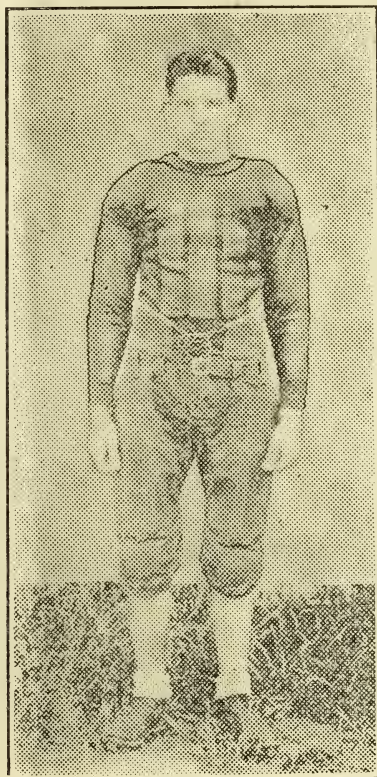
YOUR HEADQUARTERS

THE STRING TO THE GATE IS ALWAYS UNTIED

---



BOB SWOFFORD



PITTS

---

M A K E

## BALLENGER HARDWARE COMPANY

Your Headquarters When in SENECA, S. C.

**"We're Pulling for the Tigers"**

---



---

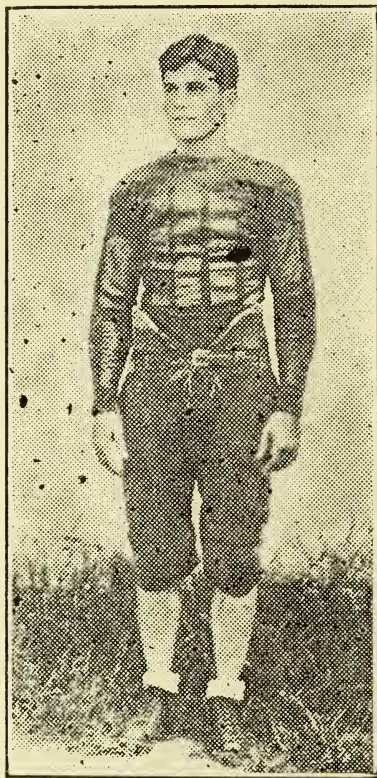
# C. M. Guest & Son

OVER 30 YEARS OF SUCCESSFUL

BUILDING CONSTRUCTION

ANDERSON, - - - South Carolina

---



**PADGETT**



**GUY DAVIS**

---

WHEN IN ANDERSON EAT AT THE

## CRYSTAL CAFE

Your patronage appreciated, so please use resolve policy

ANDERSON, S C.

---

# Fat Hall Wears An O'Shea Honor Sweater



The Clemson Team is equipped  
with O'Shea knit goods

**O'Shea Knitting Mills**

**2414 Sacramento Ave.**

**Chicago, Ill.**



---

# GEORGIAN HOTEL

Athens' finest hotel will be the headquarters for the Clemson  
Team while in Athens

Owner—Managership

D. A. CUNNINGHAM

---



SNOWDEN



ROBINSON

---

WHEN IN SENECA—

## LUNNEY'S DRUG STORE

"Seneca's Better Drug Store"

---

---

# Carolina's BEST Hardware Store

Always a Complete Stock  
HARDWARE  
HOUSEFURNISHINGS  
CHINA  
ATHLETIC GOODS  
FARM IMPLEMENTS

High Quality Merchandise—Prompt Service  
Reasonable Prices

**SULLIVAN-MARKLEY HARDWARE CO.**

CLEMSON'S GREENVILLE HEADQUARTERS  
GREENVILLE, S. C.

---

DRINK

*Coca-Cola*

DELICIOUS—REFRESHING

IN BOTTLES

**COCA-COLA BOTTLING COMPANY**

ANDERSON, S. C.

---



Clemson's Drug Store

L. C. Martin Drug Co

"Down the Street"

Soda Tobacco  
Drugs

TOASTED SANDWICHES

WHITMAN AND NORRIS CANDIES

STANDARD AND COLLEGE STATIONERY