

Tuesday
November 14, 1995

INSIDE

U. News & Notes . . . 2A
Opinion 4A
Sports 5A

The Tiger

NON-PROFIT
U.S. POSTAGE PAID
CLEMSON, S.C.
PERMIT NO. 10

FREE, ONE PER PERSON

Established in 1907, South Carolina's Oldest College Newspaper

NEWS 4 FORECAST

TODAY-chance of rain/snow,
high mid-40s
WED. & THUR.-partly sunny,
high 50s, low 30s

Volume 89

Clemson University

Issue 19

Campus safety concerns all

JENNIFER J. PATTON
assistant news editor

When the lights are turned off and the door is safely latched, one would think they would have a safe night's sleep.

This is what Kelly Wright and Christy Phillips thought as they turned off the lights and locked the door before turning in for the night.

At approximately 1 a.m., a loud noise woke Kelly and Christy. They looked toward the door, and Christy got up to see what had caused the noise. To their surprise there was a man lying beside their door, trying to get in.

Christy tried the door and it was unlocked. Christy asked the man what he thought he was doing. The man told Christy and Kelly that the person at the front desk told him that he could go through their room to get to his.

"What were we supposed to do if he had gotten in the room?" said Kelly. "Here we were, two females alone and not aware of what he was capable of doing."

Later, the women learned that the man lived on the floor above them. He had no reason to be trying to get into

their room.

"It is kind of scary when you think about it," said Kelly. "The desk clerk did not even i.d. him or see if he even belonged in that room."

Incidents like this happen more frequently than one might think. It all relates to

how safe students are on campus. Locking your door at night may not guarantee your safety. Campus police have taken many measures to ensure safety on campus.

"One thing that students

see SAFETY, page 3A

CLEMSON UNIVERSITY CRIME STATISTICS				
Number of Reported Incidents				
	1993	1994	1995	
Murder	0	0	0	
Rape	1	1	0	
Robbery	0	0	2	
Aggravated Assault	12	12	5	
Burglary	341	33	18	
Motor Vehicle Theft	6	1	0	
Number of Arrests				
Liquor Law Violations	98	320	43	
Drug Abuse Violations	22	28	14	
Weapons Violations	1	5	1	
DUI	10	18	16	
Disorderly Conduct	34	65	31	
Vandalism	11	219	151	

source: Clemson University
infograph by: Rob Edwards

3 percent tuition hike

ROBIN EDDY
staff writer

Clemson will face a three-percent increase in both housing tuition and meal plan costs due to construction and maintenance on the dining halls and various housing buildings.

Maintenance costs, such as reroofing and the rising cost of water and utilities are not appropriated by the state. Both housing and the dining service are totally self supporting.

Beginning in the 1996-1997 school year, students will experience a three percent increase in meal plan costs. According to John Newton, a member of the Budget and Finance committee, this increase is necessary because "we are facing two very large capital projects."

These two projects are the reroofing of Schilleter and Harcombe dining halls, which are estimated to cost a total of \$700,000. The three-percent increase amounts to a maximum increase of \$27 per semester, depending on the meal plan. Newton said that the repairs to the dining facilities

are a necessity and that his committee always tries to "keep these things to a minimum."

Also planned "in the near future is the renovation of Schilleter dining hall," said John Gilbert, operational manager.

Two separate bids will be sent out to contractors for the reroofing of the dining halls, and, depending on the contractor, the dining halls "probably would not have to be shut down," said Gilbert.

Coupled with the three-percent meal plan increase, students will also face a three-percent on-campus housing rate increase beginning in the 96-97 school year. Due to rising operational costs and maintenance needs, students will pay anywhere from \$25 to \$40 more per semester with the average increase being \$32 per semester.

"We did not have a rate increase for this year," said Verna Howell, housing director, "but there were definitely increased costs."

see PRICES, page 3A

Wilkins emphasizes fair representation

MARISSA HUDSON
staff writer

With the shift of the policy making moving to local and state government, the Speaker of the House of South Carolina's House of Representative, David Wilkins is placing emphasis on fair representation.

"It is a new day in government, both at the federal and state government level," said Wilkins Thursday at the Self Auditorium in the Strom Thurmond Institute.

He believes tremendous change is taking place and there is "new leadership, new vision and new players at the table at every level."

Wilkins spoke of the fact that the country has its eyes set on the United States Congress. If reform measures pass, there will be an historic shift in responsibility and money from Washington to the state level. If these changes occur, the responsibility of such programs as Welfare and Food

Stamps will be turned over the state level. Wilkins believes heavily in a move towards decentralization and federalism.

Wilkins also spoke of how the public needs new annexation options. "If we are to see local governments improve, we need to cultivate broad support beyond the general assembly and into the community," said Wilkins.

More localized government, in his opinion, would make government more accountable to the people. On the state level, Wilkins wants committees to work closely with local and state governments. The ultimate goal, he said, "is to effectively represent people in our district, improve the quality of life for South Carolina citizens and keep the lines of communication open."

He closed his speech with an invitation to "call, talk and visit him with thoughts and

see WILKINS, page 3A

With highest regards



Renee Johnson/staff photographer

Retired Brigadier General Lewis Edward Maness (right) addressed a ceremony in respect to all veterans in Memorial Stadium Saturday during the Clemson-Duke football game.

CAT enhances community

ROBIN EDDY
staff writer

The University shuttle buses will be used as the part of the new transit system that will be throughout the campus and the city of Clemson.

The Clemson Area Transit system (CAT) will begin operation in January. This joint city/University transit system will run both on- and off-campus, though 90 to 95 percent of the service will be on-campus and the off-campus, routes will be to where students live off-campus.

The new fleet will be comprised of 11 buses all of which will be handicap-equipped. The largest buses will have a seating/standing capacity of approximately 43 people. Students, faculty and residents of the city of Clemson may ride the buses free of charge.

Paul Shelton, dean of Municipal and Health Services, said that this implementation will provide "better service for students both on- and off-campus."

The CAT transit system will be an enhanced system, and the University will not pay any more for this city-run system than it would pay for its own system.

CAT will not be in full force until April, but students will begin to see the buses around campus in January. While the city of Clemson will employ five or six full-time drivers, Clemson students will be used to fill in the other 20 or so driving spots.

Clemson students were the subject of an admissions report presented to the Board by Robert Barkley, associate director of admissions. This year's freshman class, with a 1042 average SAT score, was the third highest in Clemson history, with the 1994 freshman class having the second highest average score of 1048. Freshmen entering the College of Engineering and Science and the College of Architecture, Arts and Humanities earned the highest average SAT scores among incoming freshmen with 1095 and 1056, respectively. Clemson's average freshman SAT score was 132 points higher than the national average and 198 points higher than the South Carolina average.

"This is a successful program that we have here at Clemson, but it's a result of the entire campus community," Barkley said. A total of 2,575 freshmen enrolled this year, with 66 percent hailing from South Carolina.

Barkley also presented information to the Board on the success of the Science and Technology Entrance Program, known as STEP. STEP is available to South Carolina students who are interested in majoring in Agriculture, Textile Management, Industrial Technology Education, Forest Management or Forest Products but whose high school grades would normally be slightly below what is required for admission to Clemson.


These students, if eligible, are admitted to Clemson through STEP and must remain in the program for one year and take part in services including a seven-week summer program where students complete an English or math course, an orientation course and a reading-improvement course.

Other supports available to STEP students include mandatory advising at least once every two weeks, mandatory study hall, free tutoring and limited course loads. Of the 407 students enrolled in STEP since it began

in 1988, 51 percent are still enrolled in or have graduated in their initial majors.

These 407 students have a five-year graduation rate of 56.5 percent while the University average five-year graduation rate is only slightly higher at 66 percent.

Other events that occurred at Friday's Board meeting include: The adoption of a new Disaster Management Plan for the University which will minimize the loss of life and/or injury in the case of a large-scale manmade or natural disaster; the approval of President Curris' plan to use ten universities as "Benchmark Institutions" with which to compare Clemson - academically and otherwise. The ten universities are: Auburn, Georgia Tech, Iowa State, Michigan State, Mississippi State, North Carolina State, Purdue, Texas A&M, University of California at Davis and Virginia Tech.

1995 FRESHMAN CLASS STATISTICS	
	
Greatest Sources of In-state Students:	
Irmo H.S.	47 students
Riverside H.S.	37
Lexington H.S.	36
Spring Valley H.S.	35
Seneca H.S.	34
Greatest Sources of Out-of-State Students:	
Farragut H.S.	
Knoxville, Tennessee	8
Allan C. Pope H.S.	
Marietta, Georgia	8
George Walton H.S.	
Marietta, Georgia	6
Centerville H.S.	
Clifton, Virginia	5
Chattahoochee H.S.	
Atlanta, Georgia	5
William R. Boone H.S.	
Orlando, Florida	5
Highest Freshmen Enrollment:	
College of Engineering and Science	771
Lowest Freshmen Enrollment:	
Health, Education, and Human Development	349
source - Clemson University infograph by: Rob Edwards	

Nurses shoot up with students

DAVID MELNYK
staff writer

The nurses at Redfern are getting the message out to students to get a flu shot before the flu season arrives. This year the nurses are taking their services to several locations around campus to reach a large number of students.

Sandy Smith, director of Nurses at Redfern, said that the response to the flu shots has been very good this year, almost 1,500 shots had been administered by Nov. 7.

Smith said this year we "decided we would take them out to the students." Last year they did not and only gave about 200 shots.

Any Clemson student with a current ID is eligible to receive the free shot. The only students who should not are those that are running a fever and those

who are allergic to eggs since the vaccine has an egg protein base.

Students can get a shot at the Student Union Nov. 28, 29, and 30 from 10 a.m. to 3 p.m. Shots will be given at Schilleter Dining Hall Nov. 14 and 15 from 11 a.m. to 2 p.m. In addition, students can go to Redfern. If the weather is nice, Smith plans to have a station in front of the library.

The flu shot is quick, easy and relatively painless, usually taking "a minute or two at the most," said Smith. Wearing loose-fitting sleeves will help the nurses administer the shots quickly. Because of the convenience of the locations, many students should be able to receive the vaccination between classes.

Smith said the "most common side-effect is soreness at the injection site."

The flu shot will not give you the

flu, but it may make you feel slightly ill. This feeling should last no more than 24 hours and can be eliminated with Tylenol. The flu shot will not make you drowsy.

The shot is 90 percent effective in healthy young adults such as college students. The vaccine takes 2-3 weeks before it is fully effective, so it is important that students get their shots before the flu season begins. In South Carolina, the flu season traditionally runs from February to March.

Smith describes the program as a "community preventative action... to protect people who live in close proximity with each other."

If you have any questions about the flu shot or any other medical concerns please call Ask-A-Nurse at Redfern at 656-2233.

Black Student Emphasis Week

JULIE JOHNSON
staff writer

Black Student Emphasis Week will be celebrated on campus Nov. 12 - 18, with events held daily. Black Student Emphasis Week was created "to celebrate the accomplishments of African American students on campus," said

Altheia Nance, Clemson's multicultural programs coordinator.

The week's events kicked off Sunday with a church service at New Holly Light Baptist Church. On Monday, a voter registration drive was held in the union. Today, there will be a luncheon in the Lila Holmes Ballroom,

and an Oratorical Contest will be held in Brackett Auditorium at 7:30 p.m. To finish the week, there will be a free showing of Bad Boys on Friday at 9:30 p.m. in Edgars.

"We are trying to get as many black student organizations to participate in these activities," said Nance.

University News & Notes

11th Annual Clemson-Carolina Blood Challenge

As a prelude to Saturday's football game between Clemson and the University of South Carolina, the 11th Annual Clemson-Carolina Blood Challenge will be held today through Thursday, 11 a.m. - 7 p.m. daily, in the Palmetto Ballroom of the University Union complex. The competition, which has become largest blood drive in the state, is held each year to boost blood supplies for the upcoming holiday season. Clemson's efforts are led by Alpha Phi Omega National Service Fraternity.

Telecom law, media merger to be discussed at Strom Thurmond Institute

"Telecom Law, Media Mergers and the Public Interest," is the topic of a roundtable discussion at the Strom Thurmond Institute today at 3 p.m. The program, in the Nancy Thurmond room, will focus on the proposed telecommunications law now pending in Congress, recently announced media mergers and related proposed legislation. Wally Bowen, executive director of Citizens for Media Literacy, will lead the discussion.

Professor lectures on environmental issues

The Strom Thurmond Institute will host an informal discussion on "Communication of Environmental Policy" at noon on Wednesday. Clemson professor Dixie Goswami will discuss how environmental policy is translated from technical information to community knowledge.

Reception to honor Who's Who students

A reception honoring Clemson students who have been inducted into Who's Who Among Students in American Universities and Colleges will be held in the Alumni Center lobby at 4:30 p.m. on Thursday. The 60 Clemson students were selected because of their academic achievement, community service and leadership.

Tiger Band performs at Brooks Center

Celebrate the spirit of the Tiger Band in concert at 8 p.m. on Friday in the Brooks Center for the Performing Arts. The Tiger Band's "Pass-in-Review" includes the best and most popular musical selections from the 1995 season. The review will feature the Tiger twirlers, drum line and flag corps.

Safety stressed

continued from 1A

need to possess is a sense of awareness," said John McKenzie, director of public safety. "When we place out the fliers describing a suspect, students need to take it seriously."

"Students need to use their street smarts," said McKenzie. "When students go out, it is always good to go out in groups and plan ahead. That way everyone knows what is planned for the night."

If students feel uneasy about walking back to their dorms, then a police escort can be called to assist the student.

However, the escort policy has been restricted, and the police fully supports the shuttle system.

"We had to restrict the escort policy," said McKenzie, "because students were using us for convenience and were not generally concerned about their safety. We are not trying to compete with the shuttle system."

The police are instructed on how to determine if an escort is needed.

"The officer on duty has to decide whether or not the person needing an escort has an actual concern for their safety," said McKenzie.

"It is hard to tell the difference between an actual need for an escort and someone just using us because they are late for an exercise class at Fike. We are not a taxi ser-

vice."

No matter how careful the police are in determining if a student is in need of an escort, some students still feel the police are not doing their jobs. Suzane Speas, a pre-physical therapy major, called for a police escort for her and her friends but was told they had to wait for 30 minutes.

"It was dark and you never know who is out there lurking around," said Speas.

The police told them that all available units were chasing a suspect.

"I don't think that the officer meant to tell us that, but I was shocked and upset that they would not help us," said Speas.

"We did not know anything about the suspect. All we knew was that he was out there and so were we."

Wilkins speaks

continued from 1A

ideas." After his speech, Wilkins was asked questions by four panelists and audience members. Topics included education, decentralization and doing away with duplicating certain government services.

Wilkins is a graduate of Clemson and the University of South Carolina Law School. He returned to Greenville fol-

lowing his graduation and has been actively involved in law for the past 24 years. The Strom Thurmond Institute of Government and Public Affairs at Clemson established the Harris Page Smith Memorial Lectures on South Carolina local government in 1989 and is responsible for Wilkin's appearance.

Prices fluctuate

continued from 1A

Students did not have to pay for the increased costs, leaving housing with the increased bill.

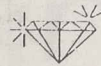
The old Johnstone Hall will still be the cheapest on-campus housing at \$780 per semester, and the most expensive on-campus housing will still be

Lightsey Bridge apartments at \$1,230 per semester.

"We are keenly aware of the impact of housing rates on our student body," said Howell.

Howell said that Housing will continue to make every effort to maintain reasonable costs for Clemson students.

Engagement Rings
10%-15% OFF!



Official Wholesale Price List!

S.A. Peck & Co.

55 E. Washington, Chicago, IL 60602

For a Free 32-Page Color Catalog

Toll-Free (800) 922-0090 FAX (312) 977-0248

Internet Catalog at <http://www.sapeck.com/sapeck>



Also: SALES, STORAGE AND MECHANICAL REPAIRS

FOREIGN DOMESTIC

Major Credit Cards Welcomed

654-0234

Member - Central Merchants Guild

Just 2 miles from Clemson Univ.

Central, SC 29630

(Off Hwy. 93/Behind Hardies)

FREE ESTIMATES/CONSULTATION

—FORMERLY AUTO SPECIALTIES INC.—

By George
GIFTS

NOW OPEN!

Located in Downtown
Historic Pendleton
on the First Floor of Hunter's
Warehouse (on the side)

646-4842

11:30 am-5:30 pm 11:30 am-5:00 pm
Tues., Wed. & Thurs. Fri. & Sat.

"Go West, You're the Best!"

- Complete Dinners Starting At Only \$5.95
- Gourmet Lunch Daily
- Every Sunday Noon until 8 pm
- Dinner 5 pm nightly
- Fresh Veal, Chicken, Steaks & Seafood
- Absolutely The BEST Salads in the Upstate!
- Romantic Italian Atmosphere
- Excellent California & Italian Wine List

PASTA HOUSE

Lunch • Sundays • Happy Hours

4126 Clemson Blvd. Next to Holiday Spa **231-8811**

REDFERN HEALTH CENTER

Monday - Friday 7:30am - 5pm

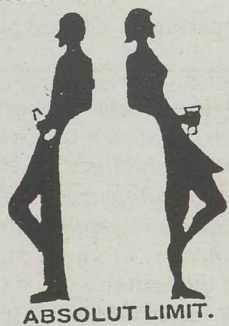
Telephone: 656-2233

Counseling and Psychological Services (CAPS)...

The American Psychological Association recently published an article addressing the most common questions asked about sexual orientation and homosexuality (Bloomer, S.J., 1995, "Answers to Your Questions about Sexual Orientation and Homosexuality," APA Office of Public Affairs). Among these are questions about whether sexual orientation is a choice and whether homosexuality is a mental illness. The answer to both, based on objective, scientific research, is a resounding "No." Research indicates that sexual orientation emerges early in life and is neither a conscious choice nor can it be voluntarily changed. The article also addresses how prejudice and false stereotypes often make the process of "coming out" an emotionally painful and "challenging process (p.2). Counseling and Psychological Services at Redfern offers a weekly support group for Clemson students who are struggling with issues associated with bisexual or homosexual orientation. Issues frequently addressed in this confidential group include feelings of isolation and loneliness, exploring the potential pro's and con's of "coming out," and learning more about the local gay community. If you are interested in joining this group or learning more about other groups offered at CAPS, please call 656-2451.

Health Education/Alcohol and Drug Education...

Clemson University
Alcohol Awareness Week



Alcohol Awareness Week Winners

Pi Kappa Alpha and Delta Gamma won the Mocktail Mixer. Susan Fagan and Julie Walters Steele, winners in the Faculty/Staff Celebrity Cookie Contest.

Special Thanks to the committee: Heidi Graef, Ginty Porter, Stacie Ellet, Leon McClinton, Thea McCrary, Arthur Logan, Marjorie Ellis, Evelyn Wallington, Parvin Lewis, Tom Dillon, Damon Shuman, Sara Hammond, Julie Walters Steele and all of Student Affairs.

Medical Services

NEED A GOOD SHOT IN THE ARM?

FREE FLU SHOTS

Convenient On-Campus Locations

Schlitter 11 a.m.-2 p.m.
November 14, 15

Student Union 10 a.m.-3 p.m.
November 28, 29, 30

Clemson

Perspective



ETHAN H. BELLAMY
editorial editor

Art Modell: Sellout

I took it very personally when one of my fellow staffers casually dismissed the deeds of the evil Art Modell (owner of the Cleveland Browns for the NFL illiterate) with a list of five very disputable "good reasons" in our last edition.

First, it was asked, "Have you been to Cleveland lately?" Well, as a matter of fact, I have. I can honestly say that in all my travels, I have yet to find a place that rivals the hospitality or good times I had in that town.

The next four reasons all say some rather frivolous things about alliteration, Art Modell being the next best thing to Bob Irsay and Cleveland needing a CFL team—none of which are, in any way, successful attempts at humor by my colleague or valid reasons for the Benedict-Arnold-actions of Big Daddy Modell.

What it comes down to is loyalty. Modell has all these millions of dollars that he wants to make sure will stay in the family when he kicks the bucket—I'd like to kick him.

You don't sell out an entire, intensely loyal city that has cheered on a team like the Browns in good times and bad.

If it meant that Modell had to sacrifice a little revenue for the sake of toughing it out for the last few years of his life then that is what he should have done—there are some things in life more important than money.

But the fact is, the city of Cleveland wasn't given a fair deal: in a straight-up auction for the team, there is no way Cleveland politicians would have ever been re-elected had they failed to outbid Baltimore.

Old Man Modell, who is now so vehemently hated by an entire NFL-abandoned city that he can no longer show his face in public there, threw away his chances of being remembered as the owner of Cleveland's pride and joy of half a century for a shiny new stadium, "alliteration" and 40 lousy pieces of silver.

CLEMSON
FARM
FIELD



Letters to the Editor

Band robbed of last 'goodbye'

To the editor:

As most of us already know, Clemson won their last home football game of the season on Saturday. What many of you may not know is that Tiger Band was not permitted to perform at halftime and was originally told not to do the pregame show. A new halftime show is performed at each home game. Having only one week between homecoming and the Duke game, we all had to work extremely hard to learn the new show, which was to be a special tribute to the Armed Forces.

As halftime approached, the Athletic Director decided that because of the inclement weather, if Tiger Band marched, the field conditions would get much worse. Although we could not understand how our flat, rubber-soled shoes would hurt the field, the disappointment overshadowed the anger and confusion for many of us.

For the graduating seniors, Saturday was our final performance in Death Valley. Our years of dedication were to come to a close with an exciting halftime show in front of our home crowd, but we never got the chance. The commitment that brought us to the band field each Saturday at 8 a.m., rain or shine (in this case, rain) was ended without the closure that many of us had looked forward to.

What Bobby Robinson took from us on Saturday is something that can never be replaced. Senior day, the last home game of the season, can never be replayed, and we won't get to perform for our last goodbye. We were unable to show our gratitude to the fans by doing what we do best.

So on behalf of Tiger Band's graduating seniors, thank you to all the Tiger fans who have supported the band program. We will miss performing for you. Also, a very special thanks to Dr. Hosler and Dr. Goodstein, who have both been with us at every step and who

both stood up for us at halftime and at one minute prior to the pregame show when we were told not to perform. Thank you and God bless! GO TIGERS!!!

Tiger Band

Commuter parking woes

This letter was sent to Joe Granger, head of Parking and Traffic Control, and is printed at the request of Rebecca A. Lee.

On Oct. 17, 1995, at 3:00 a.m. I received a parking ticket for parking in an unauthorized area. Since I am a commuting student and I was parked in a commuter parking lot, C-2, behind PA&S building, the area for which I have paid \$42 to park, I was dumbfounded. I had no idea that from 2:30 a.m.-7:00 a.m. commuting students were not allowed to park in commuter spaces.

I am a graduate student with research obligations here on campus, which, unfortunately, often keep me in the lab until very late. Prior to Oct. 17, my obligations never kept me in the lab past 2:00 a.m., but on that night I was in the lab until 4:00 a.m. I had parked my car in the commuter lot behind the PA&S (C-2) at 1:00 p.m. that afternoon and had not left the building since that time. I had assumed that I could park in the commuter lot whenever I needed to.

When I spoke with the parking services office I was given several reasons for this rule. One of the reasons they gave was safety, both my personal safety as well as the safety of my car. Second, they said that since many on-campus residents were obtaining permits so that they could have better park-

ing, one way to cut back on this practice is to limit the time commuters can be parked on campus. Third, they said that I can park in an employee space during the hours in question, so there is no need for me to park in a commuter space.

These reasons, while seemingly valid points, do not make sense to me for several reasons. On the issue of safety—while I appreciate the concern—why are commuting students the only ones affected? Both employees and campus residents can be parked in their designated spaces on a 24-hour basis; are their cars safer? In regards to my personal safety, is leaving the building on multiple occasions any safer than leaving my car in a commuter lot?

I also realize that campus residents obtaining commuter permits presents a problem, but I do not think it is such a widespread practice that it could not be remedied in another manner, such as cross-referencing social security numbers of persons applying for parking permits and those persons listed as campus residents. The last reason is perhaps the most confusing to me because it seems to be an inconsistency in policy. I can move my car as little as 10 feet to an employee space and not get a parking ticket during the hours in question, yet I cannot leave it in my designated space.

Rebecca A. Lee
Graduate Student
Department of Food Sciences

Write to The Tiger & voice your opinion about whatever concerns you on-campus or around the world. Letters to the Editor are subject to editing for space and style. Anonymous letters will not be published.

Letters to the Editor
Box 2907, Clemson, SC 29632
E-Mail: tiger@hubcap.clemson.edu.

The **Tiger**
Established in 1907, South Carolina's Oldest College Newspaper

MICHAEL BURNS
Editor in Chief

GREG SCHMIDT
Managing Editor

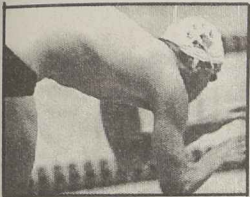
JOHN LEARY
Business Manager

Address: University Box 2097, Clemson, SC 29632-2097. E-Mail: tiger@hubcap.clemson.edu. Location: Suite 906 of the Edgar A. Brown University Union. Main Office: 656-2150, Advertising: 656-2167, Business: 656-1596, Business/Advertising Coordinator: 656-7002, News & Editorial: 656-4006, Sports & Time Out: 656-0986, Photo & Circulation: 656-4007, FAX: 656-4772.

Subscription rates: \$30 per year, \$18 per semester. Local & national advertising upon request.



Swimmers sweep



see story, 6A

SPORTS

Clemson University

Inside

- Men's Volleyball
- Women's Soccer
- Women's Basketball
- Swimmers and divers sweep dual meet' 6A

Tigers bowl-bound

JAY MARCOUX
assistant sports editor

Clemson clinched a bowl berth by defeating Duke 34-17 in the mud Saturday, thanks to a record-setting day by tailback Raymond Priester. Priester finished the day with 263 rushing yards and a touchdown, breaking the Clemson single-game rushing record.

"The offensive line came out and did their best every time. I credit our whole offense. They came out to play today," said Priester. "It's a credit to our coaching staff and the determination of the team."

The Tigers once again dominated in the secondary as Brian Dawkins picked off three Spence Fischer passes in the first quarter, setting a Clemson record for the number of interceptions in one quarter.

"I was in the right place each time," said Dawkins. "Each time I caught the ball I went down because all I was thinking about was catching the ball."

Dawkins' first interception set up Clemson's first scoring drive, highlighted by a 37-yard scamper by Nealon Greene. Emory Smith crossed the goal-line on a one-yard run to put Clemson up 7-0.

"Each week we come out and play hard, and now it's paying off," said Smith.

Clemson and Duke exchanged a

series before Dawkins intercepted another pass from Duke's Fischer. The Tigers failed to capitalize, but Dawkins picked off another Fischer pass on the first play of the next drive.

The Tigers scored this time keyed by an 18-yard run by Greene. Smith scored from two yards out for a 14-0 Clemson lead.

The Tigers and the Blue Devils exchanged series until the closing seconds of the second quarter, where Clemson managed to take advantage of excellent field position. Jeff Sauve ended the drive with a 28-yard field goal. The Tigers went into halftime up 17-0.

The Tigers scored quickly once again on the second series of the third quarter when Priester broke away for a 43-yard touchdown run. It was Priester's longest run of the season.

Despite the high winds and rain, Duke threw the ball successfully in the second half. The Blue Devils scored on their next possession when Fischer connected with Marc Wilson for a nine-yard touchdown pass.

This was the first passing touchdown against the Tiger defense since the Oct. 7 Georgia game.

Duke's offense struck again quickly with a Laymarr Marshall one-yard plunge, but the Tiger offense could not

see DEVILS, page 7A



Renee Johnson/staff photographer

Raymond Priester (27) gained a Clemson record 263 yards on 32 carries against Duke. He had more yards rushing than every other ACC team Saturday.

Virginia trips Tigers, again

KEVIN BRIDGES
staff writer

The Clemson men's soccer team ended their run in the ACC tournament with a 1-0 loss to the No. 1 ranked Virginia Cavaliers in the finals at Duke Soccer Stadium Sunday.

The victory represents Virginia's fifth consecutive tournament championship. It is also the third time in the past

five years that they have beaten Clemson to win it.

The only goal of the game was headed in by Billy Walsh at the 58:23 mark. Clemson had thirteen shots to Virginia's twelve and nineteen fouls to Virginia's eleven. Matt Jordan made five saves while Virginia's goalkeeper made seven. Clemson had five corner kicks to Virginia's four.

The 1-0 win was Virginia's

Tiger Soccer

first shutout against Clemson in the two teams' last eleven meetings. With the loss, the Tigers' record fell to 15-5-1 on the year.

Clemson's road to the ACC tournament final began with a 5-0 victory over N.C. State. The five-goal margin is the largest victory margin in ACC tournament history and five

goals ties the record for most scored by a team in an ACC tournament match.

Clemson struck early as Miles Joseph scored at the 2:23 mark off an assist from Danny Care. Joseph later tied the record for most goals scored by an individual in an ACC tournament match with his second at the 17:00 point in the game.

Care scored the third goal at the 20:58 point on an assist

from Mark Kinch. The final goal of the first half was scored by Wolde Harris, bringing his career total to 76, just three short of the ACC record. Imad Baba capped off Clemson's scoring at the 63:45 mark off an assist from Tony Williams.

Clemson had 13 shots to N.C. State's nine and took five corner kicks while N.C. State had none. Clemson out fouled

see TIGERS, page 7A

Hoopsters beat Bullets

BRENDAN POMEROY
staff writer

The Clemson men's basketball team won its preseason opener against the Brisbane Bullets Friday night 66-60 behind a strong second-half comeback.

After shooting a dismal 12 percent from the field in the first half, the Tigers came out hot after intermission. "I was really happy the way they responded to a 17-point deficit," said coach Rick Barnes.

Having only three players with significant experience returning from last year's squad, Barnes played all seven freshmen, whose inexperience was apparent at the outset. The

Tiger Basketball

young Tigers came out looking tentative and managed to connect on only three of their 25 first-half shots. "I expected all of them to be tight since it's their first game," said Barnes. "I'm surprised. It's totally different than playing against themselves."

Once they settled down, however, Clemson was nearly unstoppable, hitting on 69 percent of their shots in the second half. Leading the way was junior guard Bill Harder, who made all five of his shots from the field, including three from beyond the three point arc.

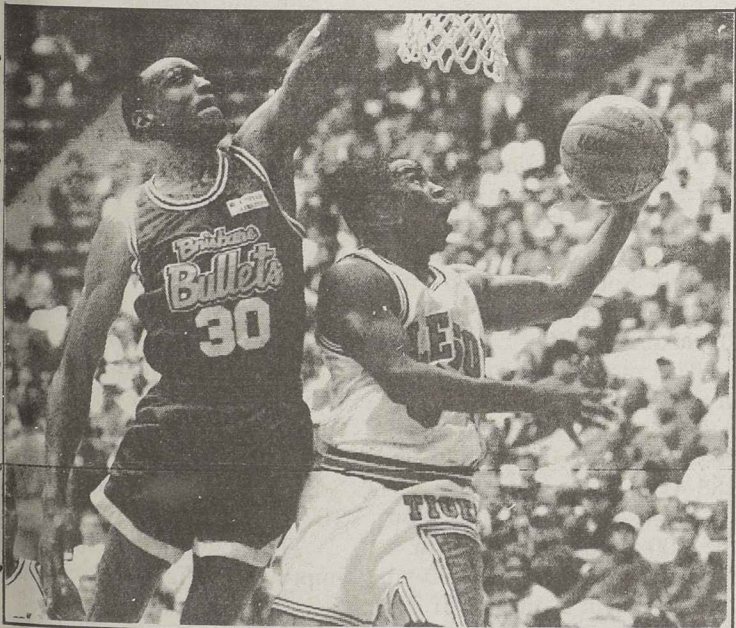
"I just got into a groove and tried to make things happen,

and everyone caught on and shot real well," said Harder.

The turning point came with 6:53 left to play when Harder hit two shots from long range, and a pretty floater from the middle of the lane, starting a string of 14 unanswered points by the Tigers. Clemson took the lead for good when 6'9" Andrius Jurkunas made a tough lay-in off of an alley-oop pass from Harder with 2:19 left in the game.

Harder led a balanced scoring attack with 16 points, followed by Jurkunas and Merl Code, who each had 11. Clemson's young lineup will get to face one more challenge before the regular season when

see FIRST, page 7A



Renee Johnson/staff photographer

Terrell McIntyre (5) was one of seven Tiger freshmen to make their debut in Clemson's 66-60 exhibition win over Brisbane.

Tiger Volleyball

Volleyball team splits 2

Netters down Devils

AMANDA FARRIS
staff writer

The Tiger volleyball team defeated the Duke Blue Devils 3-2 Saturday night in Jervy Gym. The Tigers won 15-6, 6-15, 14-16, 15-4 and 15-9.

Julie Rodriguez led the Tigers with 27 kills and added 12 digs, a block solo and three block assists.

"Julie played really well for us Saturday," said coach Jolene Hoover. "We were struggling for points from our left side attack, and she came through for us."

Freshman Stephanie Schulz had an impressive .348 hitting percentage and added 11 kills.

The Tigers improved their

record to 23-8 overall, 11-8 in the ACC. This was their final regular season match.

Their next match will be Thursday, Nov. 16, at 7 p.m. in Jervy Gym in the opening round of the ACC Tournament.

The second-seeded Tigers will take on the seventh-seeded Florida State Seminoles.

In other first round games Thursday, top-seeded Georgia Tech will play No. 8 Virginia at noon, No. 4 North Carolina will take on No. 5 N.C. State at 2 p.m. and No. 3 Maryland will meet No. 6 Duke at 5 p.m.

The championship game will be televised Saturday, Nov. 18, at 3 p.m. on SportSouth.

Pack takes match in four

OWEN DRISKILL
staff writer

The Clemson volleyball team dropped a four-game match to N.C. State at home Friday. Clemson trailed early in the match, losing the first two games 12-15, 13-15. After winning the third game 15-8, the Tigers lost the match in game four by a score of 6-15.

Freshman Stephanie Schulz scored her best marks on the season with 18 kills and one error on 26 attempts for a .654 hitting percentage for the Tigers. "Stephanie played a tremendous game on Friday," said coach Jolene Hoover. "I wish we could have gotten her the ball more."

Junior Julie Rodriguez followed Schulz with 14 kills.

N.C. State outside hitter Shelley Partridge led the Wolfpack with 21 kills.

"We played very well at N.C. State and won easily," Hoover said. "I think we had a tendency very early not to respect N.C. State as much as we should have."

In game two, the Tigers trailed by an 11-5 margin, but the Tigers came back to lead 11-12. Following a series of side-outs, the Tigers matched an N.C. State point to retain the lead at 12-13. The Wolfpack answered by scoring three consecutive points, putting the Tigers at an 0-2 disadvantage in the match.

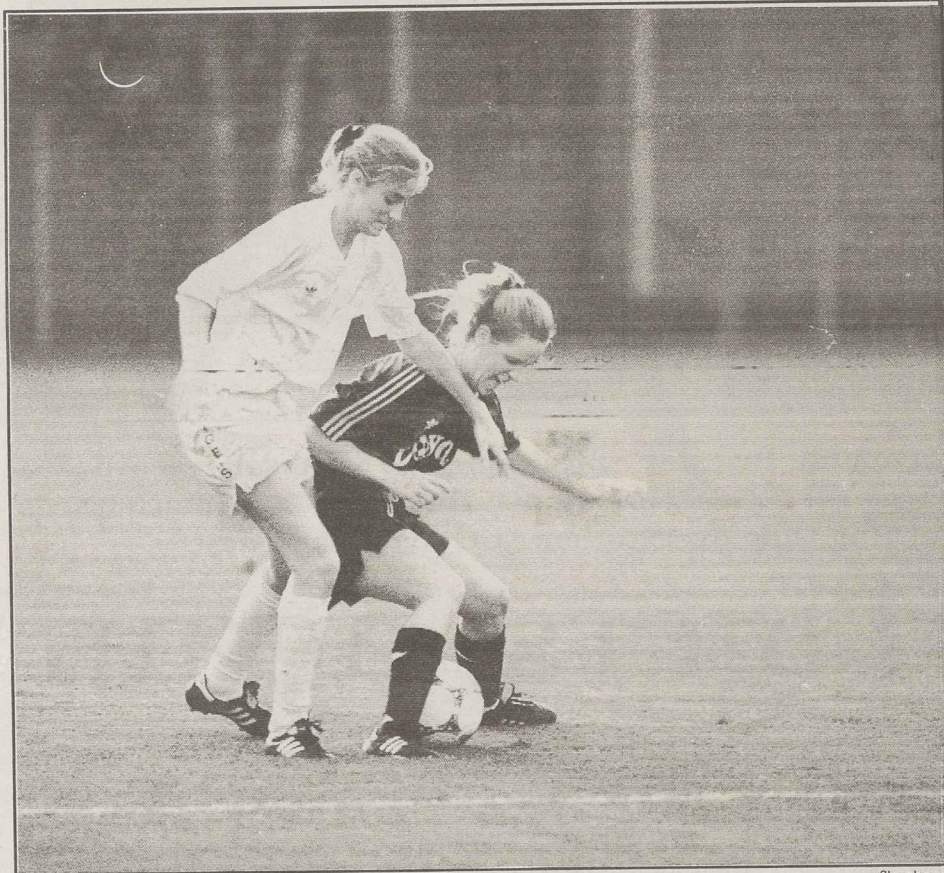
Clemson dominated the third game after falling behind 5-2. Coach Hoover substituted

junior outside hitter Stacey Wagner into the game to spark scoring from the Tigers' left attack.

"We weren't getting enough out of our left-side. Stacey came in and did a good job for us," said Hoover.

The Wolfpack responded with a point, but the Tigers scored the next six to give them a 15-8 victory.

The Tigers fell behind to a 10-4 disadvantage in game four. Clemson responded with a couple of points, but a comeback was not in order. Shelley Partridge and Pam Sumner made some crucial shots for N.C. State leading the Wolfpack to a 15-6 win and a 3-1 match victory.



The Lady Tiger soccer team finished their second season with a 14-7 record, 2-5 ACC, and their second straight NCAA Tournament appearance.

Lady Tigers fall to Texas A&M

HEATHER A. LANKFORD
assistant layout coordinator

The No. 16 Lady Tigers were defeated 4-1 Sunday by No. 13 Texas A&M in the first round of the NCAA Division I Women's Soccer Championships before a crowd of 672 at the Aggie Soccer Complex.

Clemson, playing in its second NCAA tournament since starting the women's program last year, finished the season with a record of 14-7, including a 1-7 mark versus the top 20 teams. This was A&M's first appearance in the tournament.

"Our team was excited about the challenge to return to the NCAA playoffs," said Tiger head coach Tracey Leone. "The second year is almost tougher than the first because there is more pressure to succeed and go farther than you did the year before."

The Aggies came out strong, scoring

their first goal within the opening four minutes of the game.

Later in the half, Clemson freshman defender Sharon Pickering crossed an over-the-top pass to sophomore midfielder Lissa Mansberry for the Lady Tigers' only score of the evening.

A&M junior Yvette Okler then scored the first of her two goals to put the Aggies ahead for good, 2-1 at the half.

Okler later netted another goal, assisted by sophomore Bryn Blalack. In the last two minutes of play, the Aggies scored one last time with another assist from Blalack.

"The fans got to see the game they wanted," said Leone. "It was a back-and-forth game that was very exciting."

Clemson outshot Texas A&M 15-11 and All-ACC goalkeeper Meredith McCullen combined with sophomore goalie Suzanne Putnam for four saves.

Women lose exhibition

SAGE ALLISON
staff writer

The Lady Tiger Basketball team lost 87-75 to the Hungarian Club team Thursday in an exhibition game in Littlejohn Coliseum.

The high scorers for the Lady Tigers were Stephanie Ridgeway with 16 points and Jaci Stimson with 13 points. Dory Kidd led the Tigers in rebounds with seven and Stephanie Ridgeway was close behind with six boards.

Other Lady Tiger scorers were Dory Kidd with nine,

Jeanette Davis with nine, Nikki Blassingame with eight, Amy Geren with seven, Jennifer Davis with five, Laura Cottrell with four, Kerri Thomas with two and Natasha Anderson with two.

For the visiting Hungarian team, Sophia Witherspoon was the high scorer of the night with thirty points and seven rebounds.

Teammates Karia Karch and Eszter Biro each had sixteen.

Biro was also the leading rebounder with a total of eight.

Tiger swimmers, divers sweep dual-meet

MACY CHATNEUFF
staff writer

The Clemson men's and women's swimming and diving teams defeated Florida Atlantic, Davidson and Georgia Southern in a triple dual-meet this past Friday.

The women's swimming and diving teams defeated Florida Atlantic by a score of 169-74, Davidson 186-52, and Georgia Southern 180.5-62.5.

Summer Ecker, a freshman diver, won the one-meter and three-meter boards.

Wendy Henson won the 200-yd backstroke with a time of 2:05.45, the second

fastest time of the season.

Other scores from the meet for the women were Florida Atlantic over Davidson 160-74, Florida Atlantic over Georgia Southern 147-96 and Georgia Southern over Davidson 155-85.

The men's swimming and diving teams defeated Florida Atlantic 152-84, Davidson 203-38, and Georgia Southern 188-49.

Jorge Anaya, a senior, won the 200-yd backstroke with a time of 1:58.51 and the 50-yd freestyle with a time of 21.71. Senior T.J. Fry won the individual medley with a time of 3:58.79, and he won third place

in the 200-yd butterfly with a time of 1:59.78.

Fla. Atlantic's Bela Szabados set a Clemson pool record in the 200-yd freestyle with a time of 1:38.40.

Other scores from the meet for men's swimming were Florida Atlantic over Davidson 150-55, Florida Atlantic over Georgia Southern 160-45 and Georgia Southern over Davidson 116-107.

This win helped to improve the Tigers' record 5-2. The team's next match will be against South Carolina at Columbia next Friday at 4 pm.

Devils drowned

continued from 5A

be stopped on the next drive as Priester had three first down rushes in a row. Smith broke away for an eight-yard touch-down run and made it a 31-14 Clemson lead.

The Blue Devils continued to gain passing yardage as Fischer connected with Reco Owens on a 63-yard pass play, Duke's longest play from scrimmage all year.

Duke managed a field goal, but the Clemson offense put the game out of reach with a 44-yard Sauve field goal to make the score 34-17.

Duke could no longer move the ball, and Louis Solomon relieved Greene and ran out the clock for the win.

"I think the main thing is that we're going to a bowl game. We've got to prepare for it, but we go on the road next week and we need this win over USC badly," said Dawkins.

Greene had 95 yards rushing to add to Priester's 263-yard total, and Smith added 33 yards and three touchdowns.

Fischer threw for 226 total yards but was intercepted three times.

It is not clear which bowl the Tigers will play in. Representatives from several, including the Peach, were in attendance at Saturday's game.

The South Carolina game may impact where the Tigers are headed over the holidays.

"We couldn't be happier than now with the position that

we're in," said coach Tommy West. "All of this may be happening sooner than I thought it would. I credit the seniors. I'm really happy for those guys."

Tigers await NCAA bid

continued from 5A

N.C. State 17-14.

Clemson advanced to the finals with a 1-0 win over the North Carolina Tar Heels. The game was scoreless until Imad Baba scored the only goal of the game at the 71:36 mark.

Both teams had ten shots, while the Tarheels outfouled the Tigers 24-19. Five cards were handed out in the match, including a red card issued to Tiger Justin Rose at the 77:59 point.

The Tigers, who were ranked sixth in the nation coming into the tournament, are expecting an NCAA bid which is to be announced this week.

First string freshman

continued from 5A

they end the preseason against Marathon Oil at 7:30 p.m. Wednesday in Littlejohn. They open the season Nov. 26 vs. UNC-Asheville.

"One thing we have this year is the versatility to play a couple of different ways. We can have two or three big guys out there or run a small line-up," said Barnes.

Get Paid to go Online!

CLT Research Associates needs full-time undergrads, 18-24, to join our online market research panel on our private online service, *The Opinionator*. It's a fun way to earn a couple of dollars from the comfort of your own computer.

You must have a modem, and we'll pay you based on how much you participate. If interested, please e-mail your name, address, phone number, and whether you need Mac or Windows software to PROTOCON@PIPELINE.COM. (All information on the service is confidential and used for market research purposes only. There is never any cost to you whatsoever.)

CLT RESEARCH
ASSOCIATES
New York, NY

Fast Break Pool Hall and Deli

Now with expanded menu!

Buy one sandwich,
get second 1/2 price!

Located on Hwy. 93 in Clemson

WEDNESDAYS

KARAOKE

6:00 - 8:00 PM & 9:30 - 11:30 PM

Sing & Dance and Have Some Fun!

BEGINNER'S LINE DANCING 8-9:30 PM

Crystal Pistol Restaurant and Bar

1026 By Pass, Seneca, SC - 888-3333



Lunch Special

Soup & 1/2 Sandwich
\$3.59

Hwy 123, East Park Plaza. Across from the new Days Inn.

Open 7 days a week 10am-10pm • Call 654-5555 or 653-PAR5

"Where do you
want to go?"

"I don't know, where do
you want to go?"



MasterCard. Accepted wherever you end up.



HELP WANTED

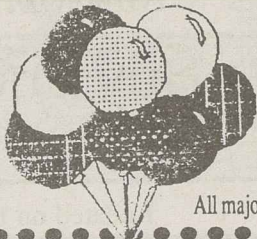
Needed line people, cooks, alley coordinators, seaters & servicers. Accepting applications 2-4, M-Thur.

(803) 234-8709

**RED LOBSTER
OF ANDERSON**

Eleanor's Flowers & Balloons

1019-150 Tiger Blvd., Clemson, SC 29631, (803) 654-8026 or (800) 654-8026



All major credit cards accepted

- Flowers • Delivery
- Balloons • Gifts
- Baskets • Cakes

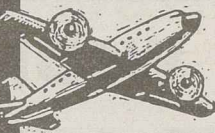
The Olde Sandwich Shoppe

"Over 100 sandwiches because variety is the spice of life"

**Buy one sandwich,
get second 1/2 price!**

valid at Seneca store only

124 Townville St., Downtown Seneca, 882-3006

**GET OUT
OF HERE!**

We Have The Lowest Student Fares!

LONDON	\$205	PRAGUE	\$279
PARIS	249	AMSTERDAM	249
FRANKFURT	239	TOKYO	375
MADRID	269	HONG KONG	409

Fares are STUDENT fares, from Atlanta, each way based on a round trip purchase. International Student ID may be required. Taxes & surcharges are NOT included.

CALL FOR A FREE "STUDENT TRAVELS" MAGAZINE!

Council Travel

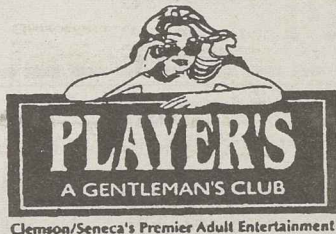
CIEE: Council on International
Educational Exchange

Internet: <http://www.ciee.org/cts/ctshome.htm>

1-800-2-COUNCIL
(1-800-226-8624)

LADIES!

Finally! Your chance has arrived!



Clemson/Seneca's Premier Adult Entertainment

Presents

**FLORIDA'S
SUNCOAST CALENDAR MEN**



Wednesday, Nov. 15:

Two shows 8:00 PM
and 10:00 PM

Tickets are \$11.00 in
advance or \$15.00
the day of the event.

AMATEUR STAR SEARCH**\$20,000 Grand Prize****Four (4) Qualifying Rounds:**

ROUND 1: October 18, 1995 ROUND 3: November 22, 1995
ROUND 2: November 8, 1995 ROUND 4: December 6, 1995

1st, 2nd, & 3rd Place Winners for Each Round

1st Place Winner\$250 Plus Automatic Entry into
2nd Place Winner\$150 Final Round!
3rd Place Winner\$100

The 1st Place Winners of each qualifying round plus two Wild Cards (2nd or 3rd Place Winners) will compete in the Final Round on Wednesday, December 13, 1995.

Final Round

Grand Prize Winnerup to \$20,000 Cash & Prizes
2nd Place Winner.....up to \$4,250 Cash & Prizes

1st and 2nd Place Winners will have photos taken by a professional photographer valued at \$1,500 (minimum) and will get a guaranteed submission to all magazines. (If published, each magazine pays the winner.)

Value of

1st place winner will receive \$500 cash. 2nd place winner receives \$250.

Additionally, Player's is offering a feature contract to the 1st and 2nd place winners. If the Grand Prize Winner is published in at least two magazines, the contract will be worth a minimum of \$20,000.

PLAYER'S • (803) 888-3424

\$20,000 Grand Prize! • \$20,000 Grand Prize!

Located on the 123 Bypass
Midway between Clemson and Seneca

BLACK STUDENT EMPHASIS WEEK

November 12 - 18, 1995

Theme: Meeting the challenges of the 21st century through
Unity, Diversity, Freedom & Equality

November 12 - Sunday

New Holly Light Baptist Church
Vans will depart at 10:15 am from Tillman
Sponsored by the Union Multicultural Programs and
Student Government Minority Council

**November 13 - Monday**

Voter Registration Drive
Union Loggia
10:30 - 2:00pm
Sponsored by Alpha Kappa Alpha Sorority



Career Planning Seminar
Byrnes Activity Lounge
7:00pm
Sponsored by Sigma Gamma Rho Sorority

**November 14 - Tuesday**

Luncheon
Lila Holmes Ballroom
11:30 am - 1:15pm
Speaker: Kimberly O. McManus
Grad Student - Guidance & Counseling
Sponsored by the Union Multicultural Programs



Oratorical Contest
Brackett Auditorium, 7:30pm
Sponsored by the Minority Council

**November 16 - Thursday**

Loggia Vendor
10:00 am - 4:00 pm
The University Shoppe
Greek Paraphernalia
Sponsored by the Union Minority Activities Committee

**November 17 - Friday**

Loggia Vendor
10:00 am - 4:00 pm
The University Shoppe
Greek Paraphernalia
Sponsored by the Union M. A. C.

**FREE MOVIE - BAD BOYS**

Edgar's Pub, 9:30 pm
Sponsored by the Union & Minority Council



For More Information call the University Union Multicultural Programs at 656-7297.

**Clemson University
Telecommunications**

Pick up your university directory
on Wednesday, November 15th,
in the Loggia or outside of
Schilleter
9am-5pm
or pick up on/after November
15th in the Telecommunications
Office, Klugh Ave. 8am-4:30pm