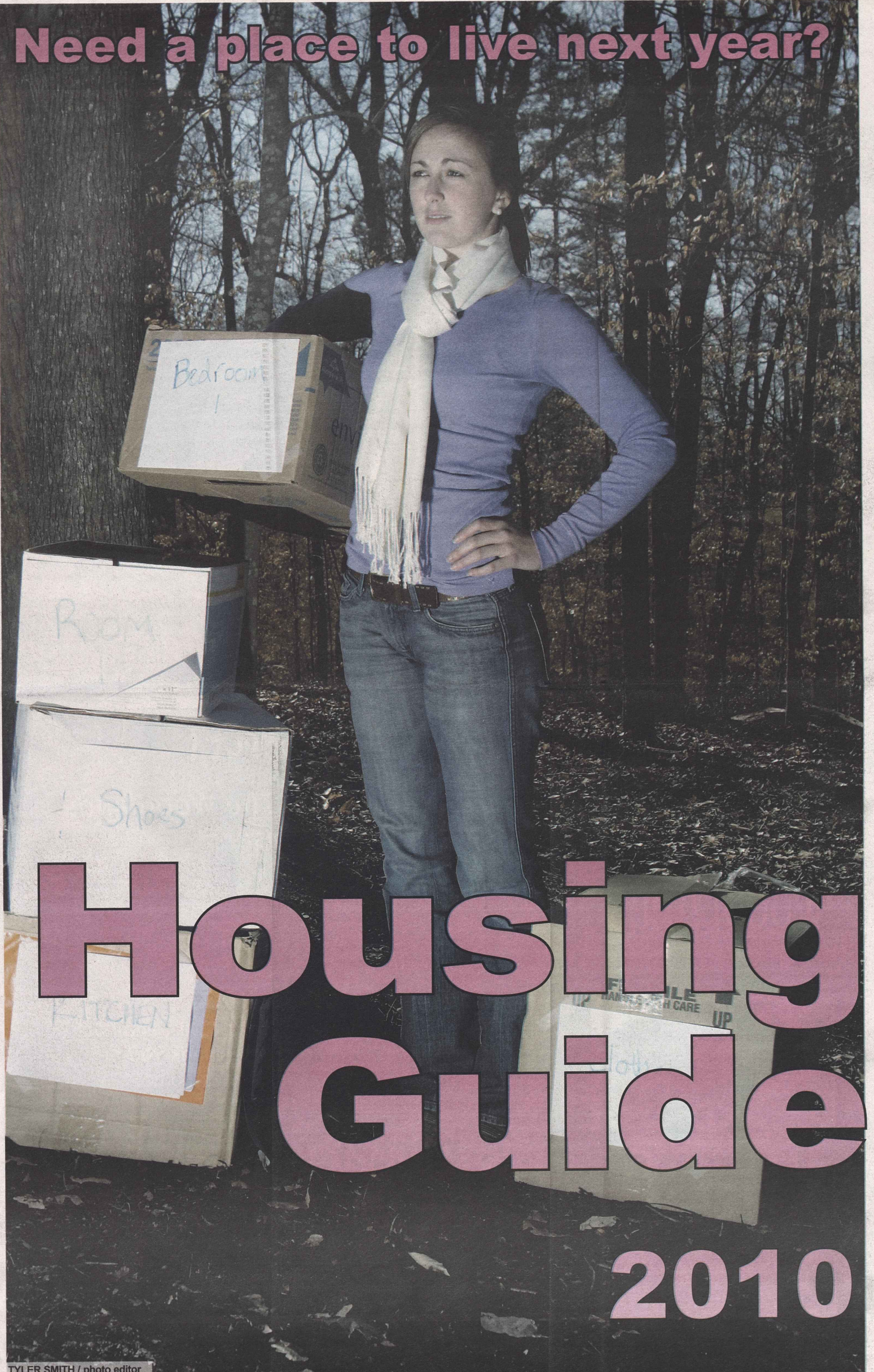


Need a place to live next year?







## HIGHPOINTE<sup>™</sup> OF CLEMSON

A student community like no other.

NOW SELLING  
AND LEASING

### PHASE III NOW UNDER CONSTRUCTION!

#### TOP 5 REASONS TO BUY AT HIGHPOINTE:

- All units were leased in 2009!
- Best amenities, 24 hour security, and a shuttle to campus
- Financing programs available
- Now offering incentives such as guaranteed rents and closing costs
- It's like owning a piece of Clemson!

#### PLENTY OF AMAZING AMENITIES AVAILABLE:

- Future walking/hiking trails
- Shuttle service available
- Just 2 miles from Clemson University campus
- Pet-friendly
- All condominiums pre-wired for security system
- 24-hour manned and gated entrance
- Entertainment lounge with HD television
- Study areas
- Wireless Internet access
- Outdoor grills and tables
- Sand volleyball court
- Beach area adjacent to Lake Hartwell
- Lagoon style pool
- Hot Tub
- Lazy Lagoon River
- 7-acre green space for all types of activities
- Outdoor fireplace
- Outside speaker system around pool
- Large fitness center
- Tanning beds

PRICES STARTING AT \$194,900

FOR SALE: 864.654.2200

FOR LEASE: 864.654.3333

[www.highpointeofclemson.com](http://www.highpointeofclemson.com)



TOM WINKOPP  
REAL ESTATE DEVELOPER, LLC  
Developing our community's potential



CRAWFORD  
FALLS



- 3 & 4 Bedrooms
- Condo & Townhomes-style floor plans
- Private Bathrooms
- Walk-in Closets
- Stainless Steel Appliances
- Granite Countertops
- Washer & Dryer
- Computer Lab
- High Speed Internet Available
- Lagoon-Style Pool
- Tanning Beds
- Fitness Center
- Volleyball Court
- CAT Bus Route



Closest Upscale Student Housing  
to Clemson University!

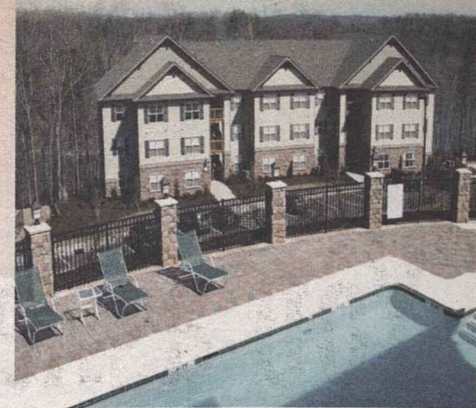
### OTHER FEATURED PROPERTIES

- Tillman Place
- Oak Crest
- Cedarwoods
- Lakecrest
- Campus West
- Fort Hill Commons
- Village Green
- Heritage Place
- Daniel Square
- South Ridge
- University Place
- College Heights

### A PRIVATE LAKEFRONT STUDENT COMMUNITY



Hart's Cove



- 2, 3, & 4-Suite Condominiums
- Private Bathrooms
- Washer & Dryer in each unit
- High Speed Internet Available
- Computer Lab
- Ample Parking
- Volleyball Court
- Basketball Court
- Pool & Fitness Center
- Tanning Bed
- Barbeque Picnic Area
- Gas Grills

Plus many more popular locations

- Houses, Townhouses & Apartments
- 1, 2, 3, & 4 Bedroom
- Furnished & Unfurnished
- Pets allowed in select properties
- Many Locations within walking distance to campus

[www.APMclemson.com](http://www.APMclemson.com)

864-654-3333

For sales contact Susie Kohout

864-303-8070

Email: [susie@carolina-realestate.com](mailto:susie@carolina-realestate.com)

ADVANTAGE PROPERTY  
MANAGEMENT

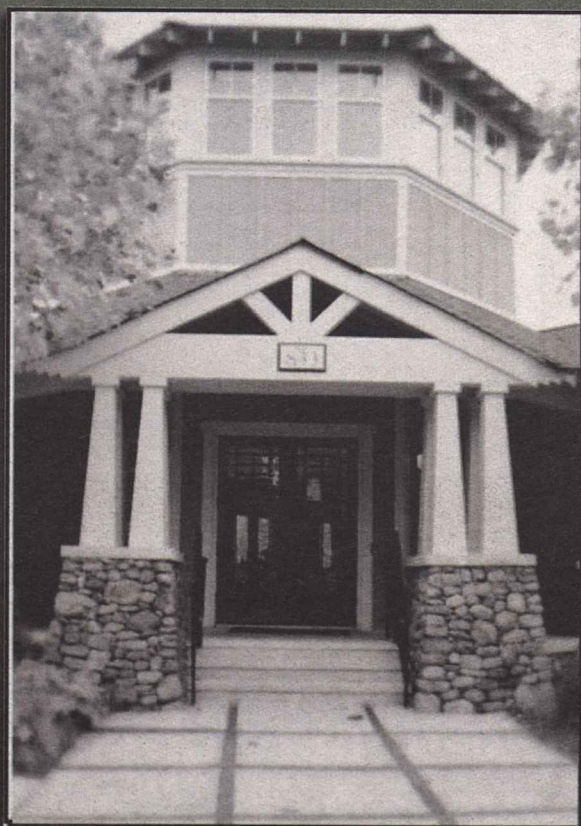
391 College Ave., Suite 202, Clemson, SC 29631

# Under New Management!



## Welcome home to The Woodlands of Clemson!

- 2, 3, and 4 bedroom condos available
- Pet-friendly condos available
- Three pools (Largest in Clemson!)
- Basketball and volleyball courts
- On the CAT bus route
- Furnished condos available
- Fitness center
- Billiards room
- 24 - Seat movie theater



Giving away iPod Touches, gift cards, and flat screen TVs as a way of saying thank you for making *The Woodlands* your home!

# It's better in The Woods!

[www.woodlandsmanagement.com](http://www.woodlandsmanagement.com)

Leasing: 864.654.3004

We invite you to come in  
for a tour today!



THE NEW MANAGEMENT  
OF THE WOODLANDS  
IS BRINGING DIRECT TV  
TO YOU! CALL FOR DETAILS  
864-654-3004 - [www.WOODLANDMANAGEMENT.COM](http://www.WOODLANDMANAGEMENT.COM)



# You asked for it, we delivered.

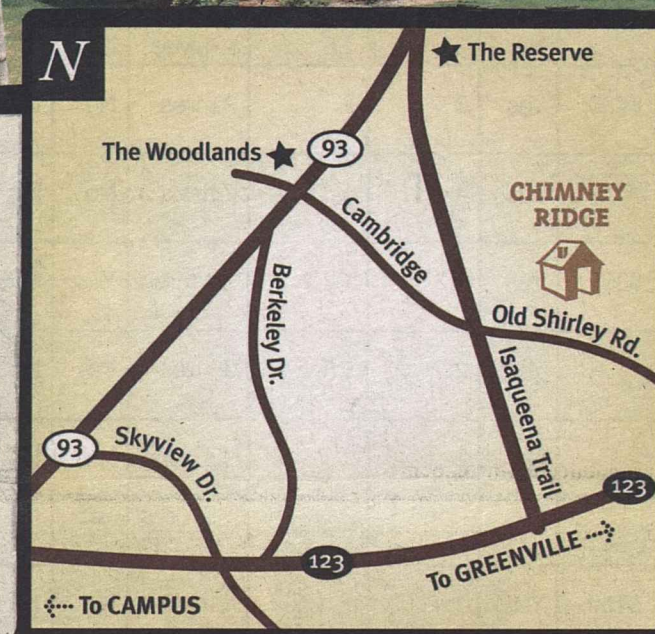
Custom made for students!  
4 BR/4 BA homes less than  
two miles from campus!

## featuring:

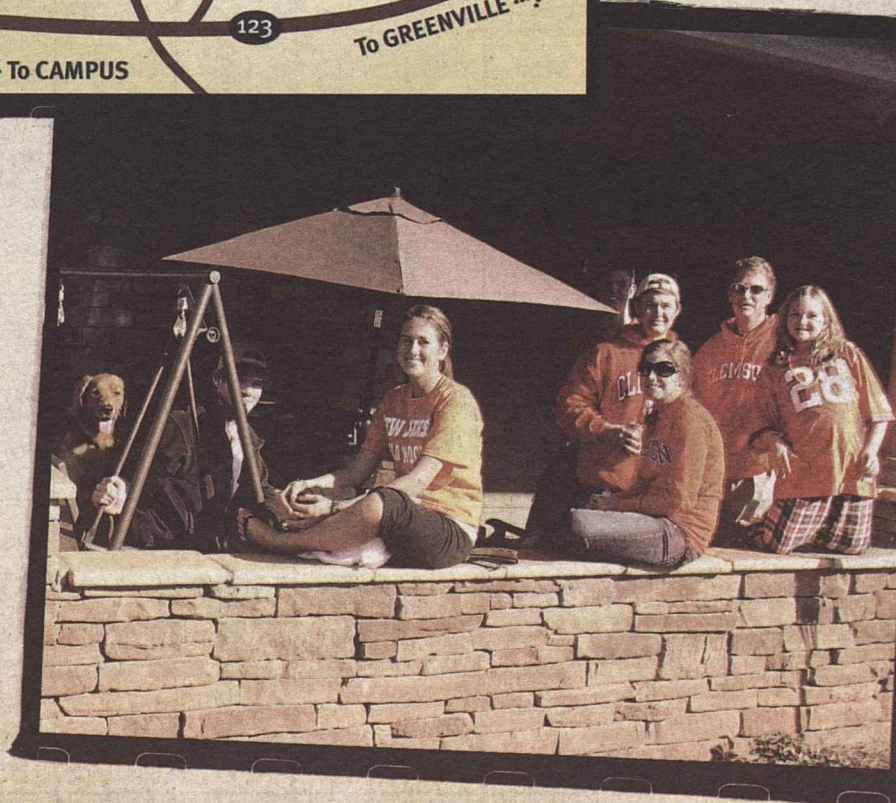
- Wide front porch with full-size, outdoor stone fireplace with easy on/off gas logs
- Resort style pool, sand volleyball & putting green
- 4 bedrooms: each with private bath and extra half bath
- Spacious kitchen with large granite island bar & granite counter tops
- 24-Hour monitored security system in each house
- Community limited access gate
- Less than 2 miles from campus

security systems  
in each unit

big front porch with fireplace



close to  
campus



THE HOMES at

# CHIMNEYRIDGE

CLEMSON, SOUTH CAROLINA



864.654.1673

202 Smokerise Drive • Clemson

[www.ChimneyRidgeofClemson.com](http://www.ChimneyRidgeofClemson.com)



# Off-Campus Housing

## Which suits you best?

	Price per Renter	Pool	# of Bedrooms	# of Bathrooms	Distance from campus	On CAT Bus route	Application fee	Furnished Available	Deposit Required	Pets allowed	Fitness Center	Security System or Officer	Patio/Balcony	Water included	Athletic courts	Computer lab	Washer/dryer in apartment
Berkeley Place	\$479, \$354	Yes	2, 4	2, 4	3 Mins	Yes	\$100	Yes	No	No	Yes	Yes	Yes	Yes	Yes	Yes	Yes
Chimney Ridge	\$450, \$495	Yes	2, 4	2.5, 4	< 3 Miles	Yes	\$145	Yes	\$450, \$495	Yes, \$375	No	Yes	Yes	Yes	No	No	Yes
Clemson Place	\$390	No	3	3	1 Mile	No	\$100	Yes	No	Yes	No	No	Yes	No	Yes	No	Yes
Crawford Falls	\$440	Yes	3, 4	3, 4	< 1 Mile	Yes	No	No	No	No	Yes	Yes	Yes	No	Yes	No	Yes
Daniel Square	\$265	No	2	2.5	< 1 Mile	No	No	No	\$260	No	No	No	Yes	No	No	No	Yes
Hart's Cove	\$367, \$400	Yes	3	3	2 miles	No	No	No	1 month's rent	No	Yes	No	Yes	No	Yes	Yes	Yes
Highpointe	\$449	Yes	4	4	2 miles	No	No	No	1 month's rent	Yes, \$200	Yes	Yes	Yes	No	Yes	Yes	Yes
Hunter's Glen	\$300, \$360, \$438	Yes	1, 2, 3	1, 2, 2	2.1 Miles	Yes	\$25	No	No	Yes, \$150 + \$15	Yes	No	Yes	Yes	Yes	No	No
Issaqueena Village	\$590	Yes	2	1.5	3 Miles	Yes	No	No	\$590	Yes, \$300	No	Yes	Yes	Yes	No	No	No
Oak Crest	\$700	No	2	2	< 1 Mile	No	No	No	\$700	Yes, \$100	No	No	Yes	Yes	No	No	Yes
Oakledge on Calhoun	\$550	Yes	2	2	1.5 Miles	Yes	No	No	1 month's rent	Yes	Yes	Yes	Yes	No	Yes	No	Yes
Keoway Village	\$415, \$450, \$500	Yes	1, 2, 3	1, 1.5	4 miles	No	No	No	\$150	Yes, \$200	No	No	No	Yes	No	No	No
Riverbank Commons	\$445, \$600, \$640	Yes	1, 2	1, 1.5, 2	.8 Mile	No	\$100	Some	\$600	No	No	No	Yes	Yes	No	No	No
Summit at Cross Creek	\$367, \$474	Yes	2, 3	2	5 Mins	Yes	\$50	Yes	\$250	Yes, \$300+ \$25 a month	No	Yes	Yes	Yes	Yes	Yes	Yes
The Reserve	\$469	Yes	2, 4	2	2 Miles	Yes	\$25	Yes	\$75	No	Yes	Yes	Yes	Yes	Yes	Yes	Yes
The Retreat	\$475, \$465	Yes	2, 4	3, 4	1.8 Miles	No	No	No	\$200	No	No	Yes	Yes	No	No	No	Yes
Heritage at Riverwood	\$499-525, \$315-325	Yes	1, 2	1, 2	3 Miles	No	No	No	\$400	Some	Yes	Yes	Yes	No	Yes	No	Yes
Heritage Pointe	\$465, \$262.50	Yes	1, 2	1	3 Miles	Yes	No	No	\$400	Some	Yes	Yes	Yes	No	Yes	No	Yes
Heritage Hills	\$435, \$283-325	Yes	1, 2	1	3 Miles	Yes	No	No	\$400	Some	Yes	Yes	Yes	No	No	No	Yes
The Woodlands	\$425, \$395, \$375	Yes	2, 3, 4	2, 3, 4	3 Miles	Yes	\$25	\$25	\$50 + 1 month's rent	Yes, \$250	Yes	Yes	Yes	No	Yes	Yes	Yes
Tiger Town Village	\$320	Yes	3	3	< 1 Mile	Yes	\$50	Some	1 month's rent	Yes, \$250 + \$20 a month	No	No	Yes	No	Yes	No	Yes
Tillman Place	\$350	Yes	2, 4	1, 2	< 1 Mile	Yes	No	Some	Some	No	Yes	No	Yes	Yes	No	No	Yes
University Place	\$225	No	4	2	1 Mile	No	\$20	Yes	Yes	No	No	No	Yes	No	No	No	Yes
University Ridge	~\$325-\$400	Yes	2, 3	2, 3	< 1 Mile	Yes	Some	Yes	Some	No	No	No	Yes	Some	No	No	Yes
University Terrace	~\$1,000 per apartment	No	3, 4	2	1.5 Miles	No	Some	Some	1 month's rent	Some	No	No	Yes	No	No	No	Yes
University Village	\$360, \$325, \$330	Yes	3, 4	3, 4, 4.5	4 Miles	Yes	\$10	\$25	Yes	Yes, \$350	Yes	Yes	Some	Yes	Yes	Yes	Yes
Villages at Town Creek	\$250	Yes	4	4	4-6 Miles	No	\$15	No	\$1,000	Some	No	Yes	Yes	No	Yes	No	Yes

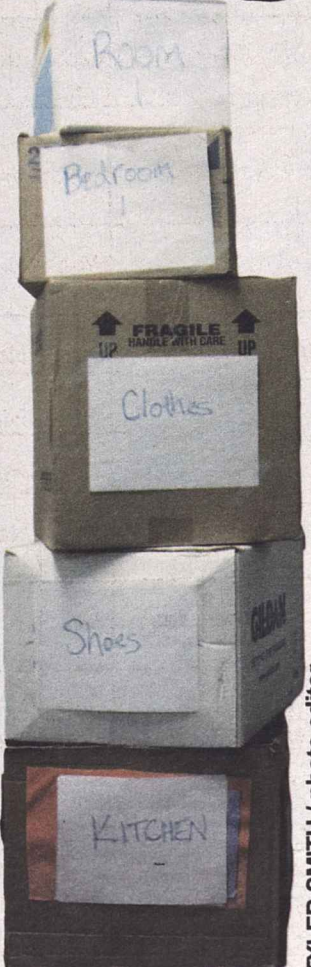
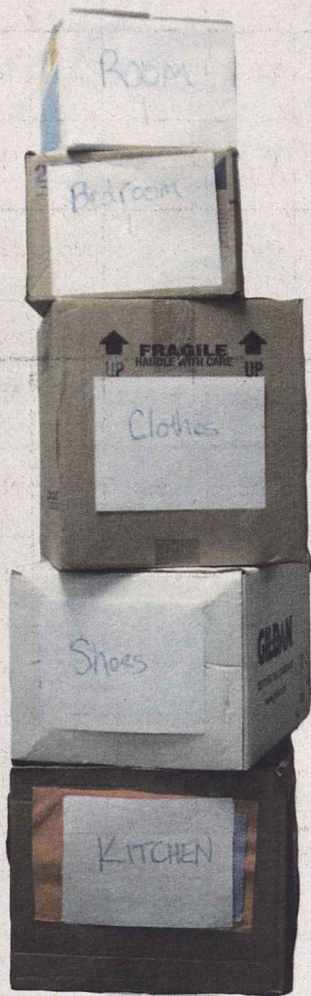


# On-Campus Housing

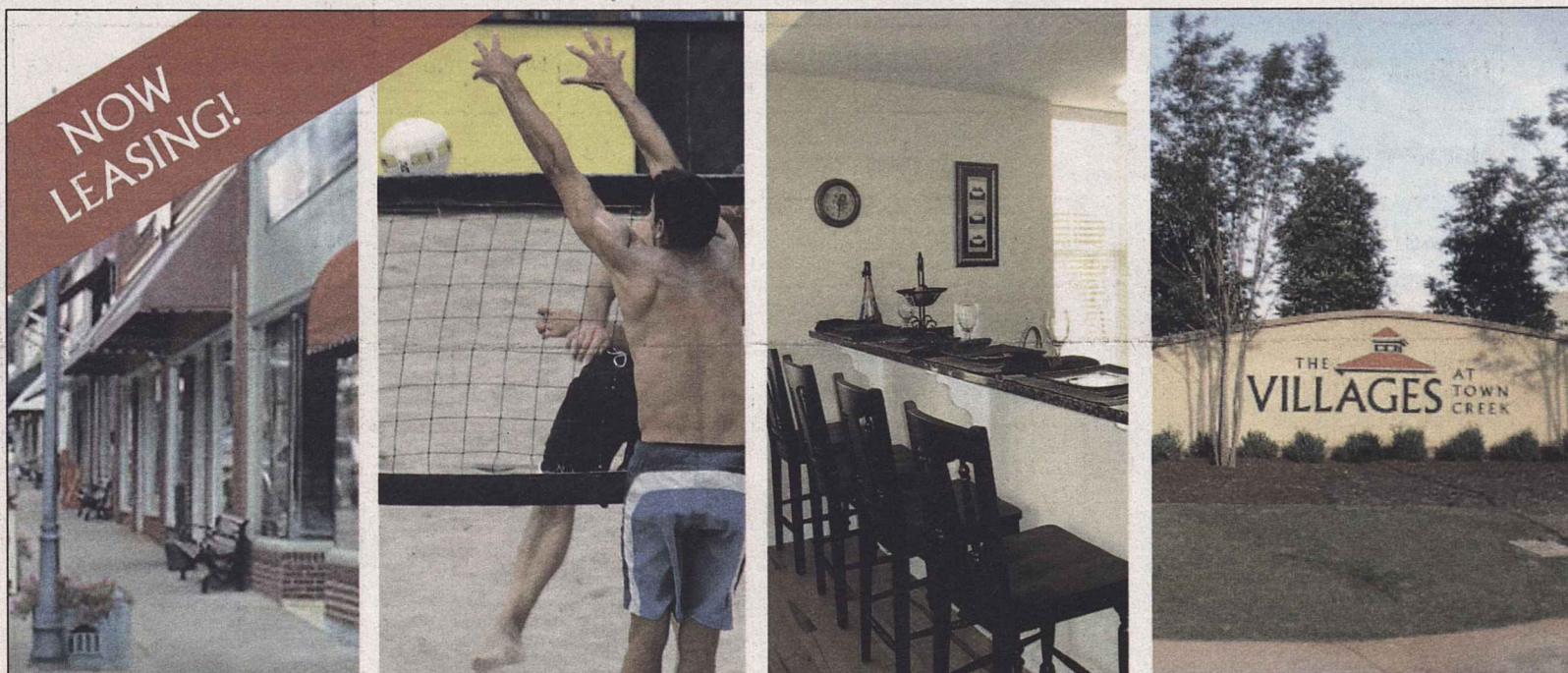
Which suits you best?

		Yearly Price	People	# of Bedrooms	# of Bathrooms	Furnished	Kitchenette	Location
<b>Dorms/suites</b>	Clemson House	\$3,910	2	1	1	All	None	East Campus
	Stadium Suites	\$4,670	4	2	1	All	On Hall	West Campus
	McCabe	\$4,450	4	2	1	All	On Hall	West Campus
<b>Apartments</b>	Calhoun Courts	\$5,900/\$3,900	2 or 4	2	1	Bedroom	In apt	East Campus
	Clemson House	\$3,980/\$3,910	2 or 4	1 or 2	1	Bedroom	In apt	East Campus
	Lightsey Bridge I	\$5,900/\$4,200	2 or 4	2	2	Bedroom	In apt	East Campus
	Lightsey Bridge II	\$5,5200	4	4	1.5	Bedroom	In apt	East Campus
	Thornhill Village	\$4,900	2	2	1	Bedroom	In apt	East Campus

\* Freshman, Greek and Honors Housing omitted.



TYLER SMITH / photo editor



## "The BEST new place to live"

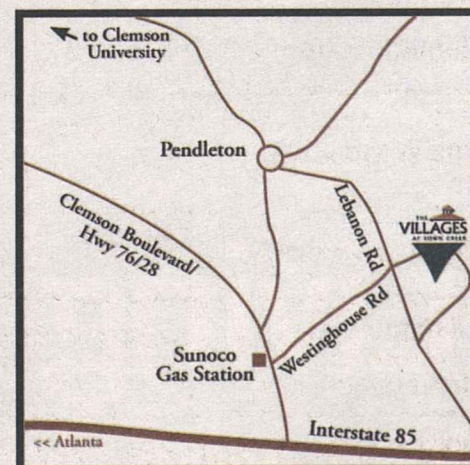
Minutes from Clemson University & ready to move in NOW!

You can have it all at The Villages at Town Creek! Beautiful, spacious floorplans with tons of extras, surrounding conveniences of the area and a great community. Our 4-bedroom townhomes have gourmet kitchens with stainless or black appliances, hardwood, tile & carpeted floors and spacious bedrooms with private baths.

### Safety Features Include:

- Smoke Alarms
- Security System
- Lighted Parking Grounds
- Fire Extinguisher in Every Kitchen
- Sidewalk Throughout
- Property Patrolled by Anderson County Sheriff's Department

**AND...** Amenities area with Swimming Pool & Pavilion plus basketball & volleyball courts.



Call us toll free at 877.646.7776 or local at 864.646.7755 or visit [www.VillagesAtTownCreek.com](http://www.VillagesAtTownCreek.com) for more information.

11 Maverick Drive, Pendleton  
Intersection of Lebanon Rd at Westinghouse Rd

Come see the BEST new place for yourself!

Void where prohibited. Prices and availability subject to change.





# Relax...

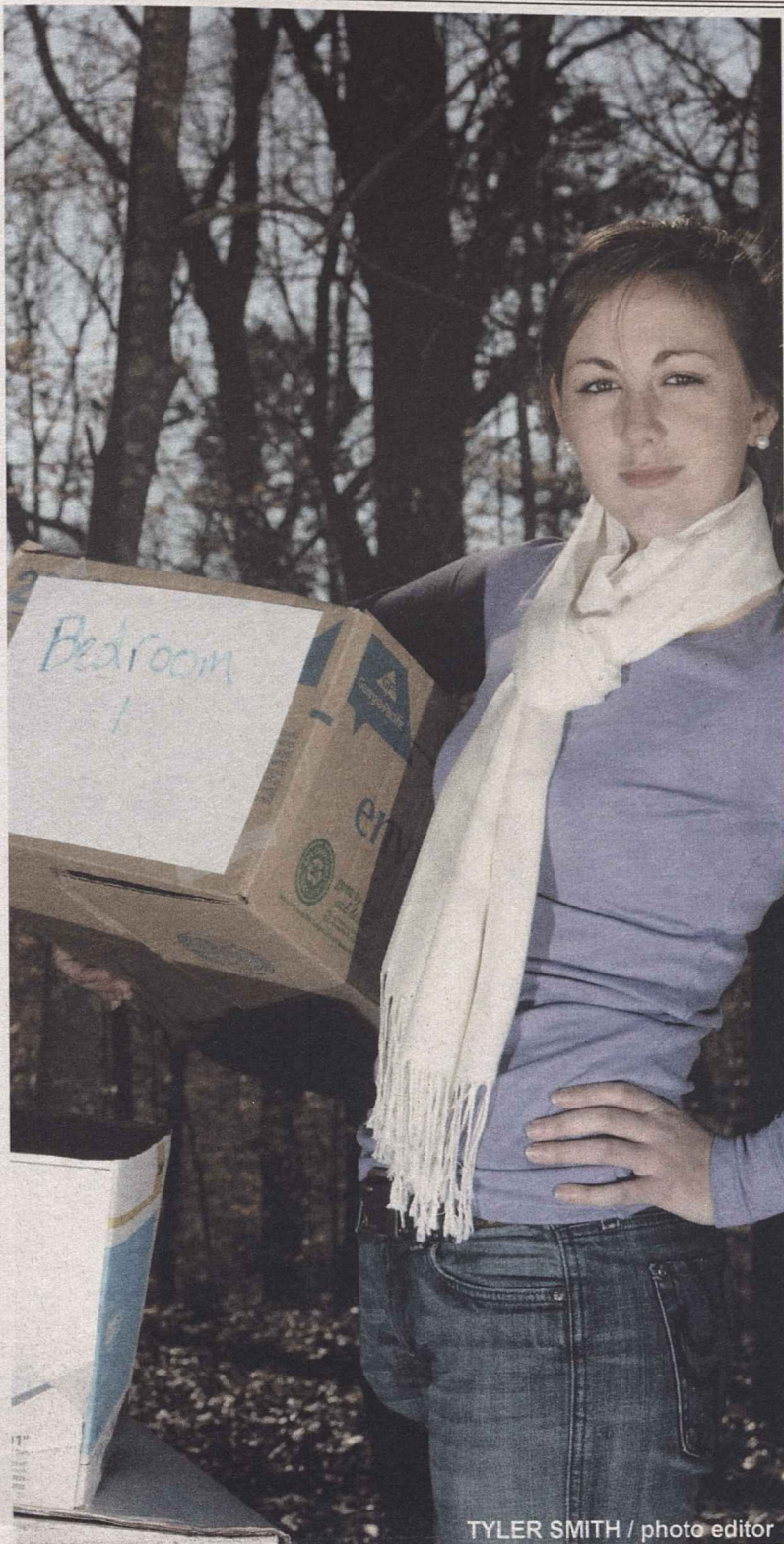


## Living on campus is easy.

Visit [www.clemson.edu/housing](http://www.clemson.edu/housing) for details.

CLEMSON<sup>®</sup>  
*home*





TYLER SMITH / photo editor

Love where you live? The Summit at Cross Creek offers ENORMOUS floor plans, top notch amenities, 24hr maintenance, and all inclusive rental rates!!

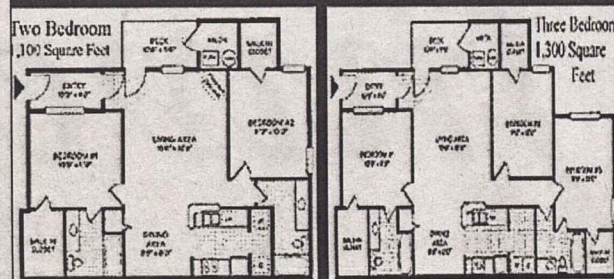


## The Summit At Cross Creek

LOVE WHERE YOU LIVE!!

100 Cross Creek Court  
Central, SC 29630  
864.639.2209

summitleasing@bellahosusing.com



### Special Rates

3 Bedroom/2 Bath \$367

2 Bedroom/2 Bath \$474

\*\*Rates are ALL-INCLUSIVE\*\*

\*\*Sign by Feb 28th and receive \$100!  
(must bring copy of ad with you when signing lease)

FREE Application & NO Deposit!

Gold's Gym membership only \$5 per month!

- \*\*All-inclusive rent includes electricity, water, wireless internet, cable with HBO\*, washer & dryer in every unit.
- Spacious 2 & 3 bedroom plans, walk in closets in EVERY room
- CAT bus accessible
- 2 swimming pools | basketball, tennis, and volleyball courts
- Game room with pool table, fireplace, and a fully equipped kitchen
- Free Tanning Bed
- 2 car wash areas | Garages and storage units available
- Private patio/balcony with storage
- Computer lab with printer
- Ceiling fan & fireplace\*
- PET FRIENDLY!!

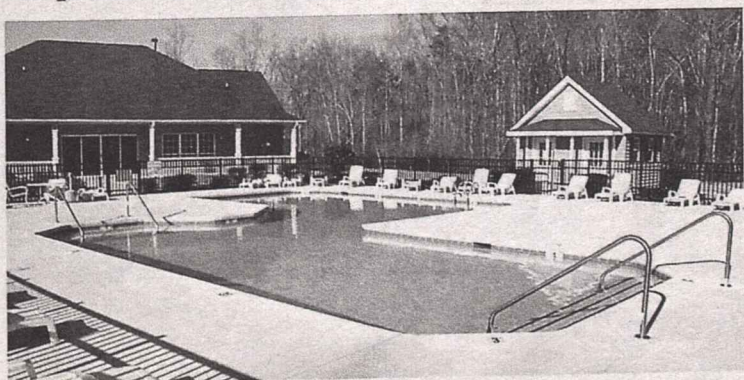
\*in select apartment homes

# Burton Properties

*"Apartment Living With a Personal Touch"*

1. Heritage Riverwood- 1BR/1BA (\$499-\$525), 2BR/2BA (\$630-\$650)
2. Heritage Pointe - 1BR/1BA (\$465), 2BR/1BA (\$525)
3. Heritage Hills - 1BR/1BA (\$435), 2BR/1BA (\$565-\$650)+\$25 for poolside
4. Heritage Station - 1BR/1BA (\$425 - includes water and sewer)
5. College Street - 1BR/1BA (\$350-\$395 + \$25 for water/sewer)
6. Westbank - 2BR/1BA (\$450)
7. Wesley Street - 2BR/1BA (\$450)
8. Stone Ridge - 2BR/2BA (\$475)
9. Vicksburg - 1BR/1BA (\$395)
10. Old Central Road - 1BR/1BA (\$335)
11. Lindsay Road - 1BR/1BA (\$355)

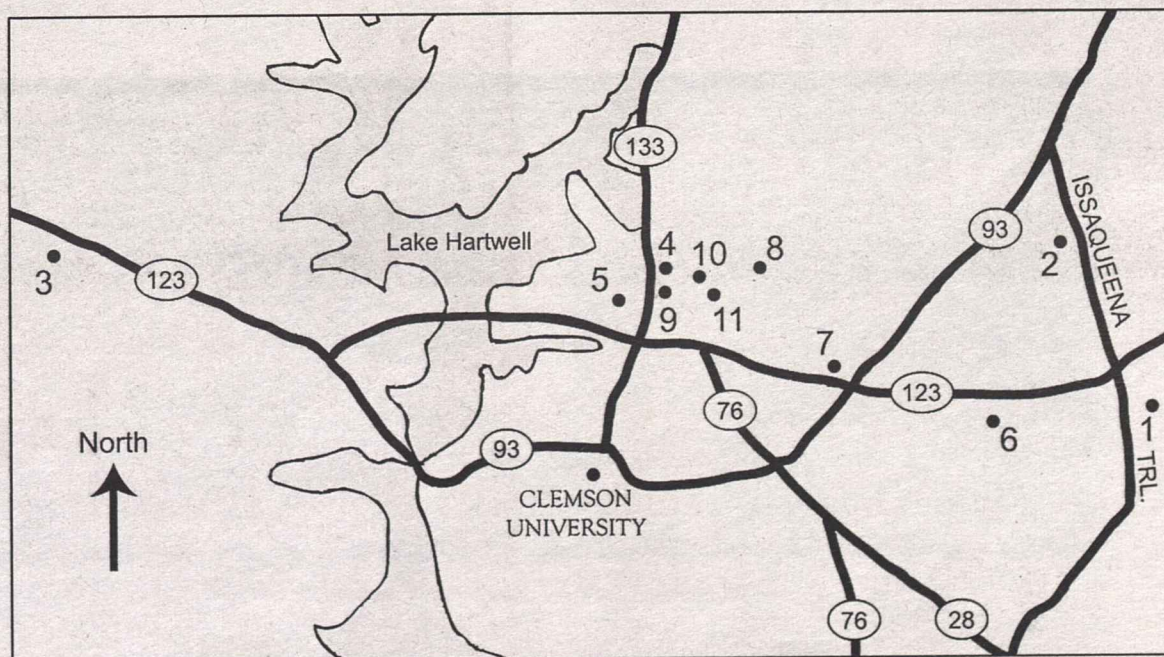
\*All prices are per apartment and not per person



### CONTACT US:

Heritage Riverwood: 654-1130  
Heritage Hills: 653-5506  
Heritage Pointe: 653-7717  
College Street: 654-1130

Visit us All other locations: 723-5914 ask for Lex  
Online at: [www.clemsonapartments.com](http://www.clemsonapartments.com)







# \$325/month!

(includes water, internet, & cable)

*Offer applies only to Townhome A, per person/per month.*

Want to live next to your friends?? Ask about our Block Housing!

 **University**  
VILLAGE  
AT CLEMSON

**No Application Fees! No Security Deposit!**  
**Pet Friendly! 9-Month Leases Available!**

**Check us out online @ [www.uvclemson.com](http://www.uvclemson.com)**  
**or call us at 864.639.5728**

*May and August Availability - Pet Friendly*  
*Individual Leases - Free Roommate Matching*

Preiss

