

Summer 5-30-2018

# Digitization Settings Chart for Cultural Heritage Materials

Joshua Morgan

*Clemson University*, [jmorga3@clemson.edu](mailto:jmorga3@clemson.edu)

Follow this and additional works at: [https://tigerprints.clemson.edu/lib\\_pres](https://tigerprints.clemson.edu/lib_pres)

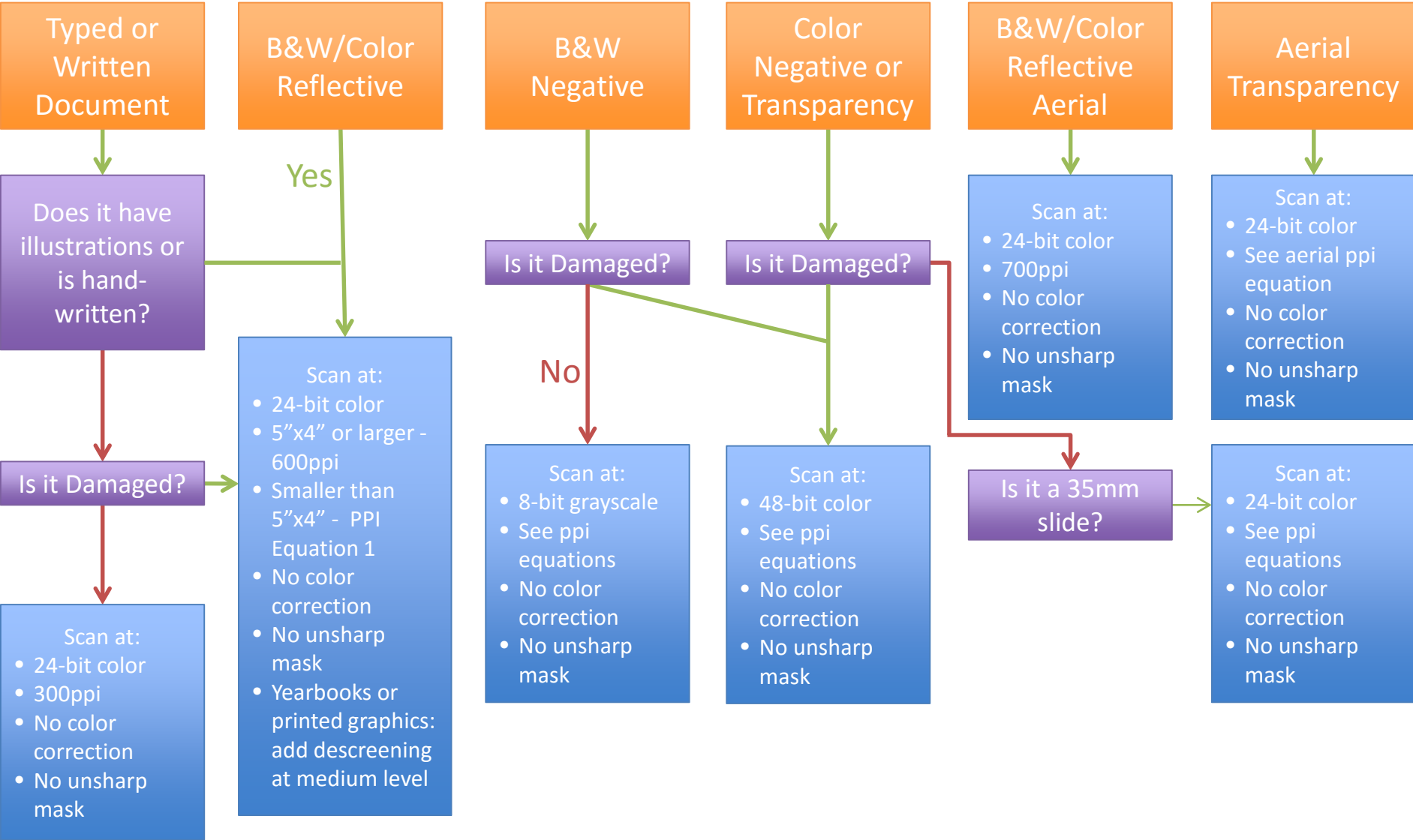
 Part of the [Library and Information Science Commons](#)

---

## Recommended Citation

Morgan, Joshua, "Digitization Settings Chart for Cultural Heritage Materials" (2018). *Presentations*. 26.  
[https://tigerprints.clemson.edu/lib\\_pres/26](https://tigerprints.clemson.edu/lib_pres/26)

This Poster is brought to you for free and open access by the University Libraries at TigerPrints. It has been accepted for inclusion in Presentations by an authorized administrator of TigerPrints. For more information, please contact [kokeefe@clemson.edu](mailto:kokeefe@clemson.edu).



PPI Equation 1, <20in<sup>2</sup>

$4000 \div \text{Inches of long side} = \text{PPI}$

PPI Equation 2, ≥20in<sup>2</sup>

$6000 \div \text{Inches of long side} = \text{PPI}$

Aerial PPI Equation

<5"x7":  $8000 \div \text{Inches of long side} = \text{PPI}$

≥5"x7":  $10000 \div \text{Inches of long side} = \text{PPI}$